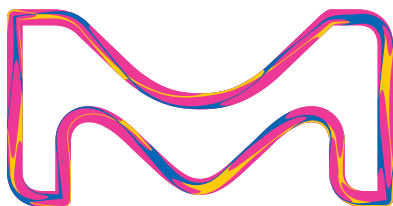


# Analyte Quarterly

2023-24

## Beyond Biomarkers

Keep your focus on the next stage. Our rigorously tested and limitation-lifting immunoassay platforms provide you with all the AssayAbilities to take your biomarker research further.



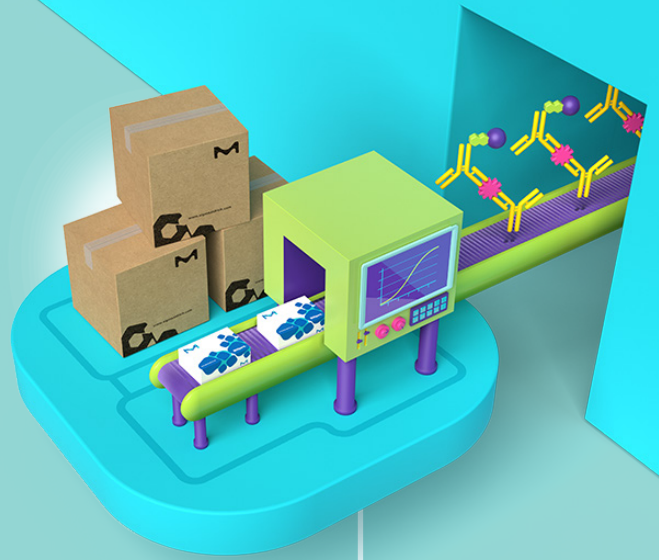
MilliporeSigma is the U.S. and Canada Life Science business of Merck KGaA, Darmstadt, Germany.

**Millipore®**

Preparation, Separation,  
Filtration & Monitoring Products

# Beyond Biomarkers

We are committed to delivering the best possible immunoassays for your research needs. Whether you are using our industry-leading MILLIPLEX® multiplex panels to broadly survey multiple analytes, performing femtogram/mL biomarker analysis using the Single Molecule Counting (SMC®) ultrasensitive immunoassay platform, or examining single proteins with our tried-and-true ELISAs and RIAs, you can confidently expect reliable measurements, a simplified user experience, and knowledgeable scientific partners to help drive your biomarker project from hypothesis to publication.



## Designed Reliability

Our Conferma® ELISAs are engineered for endogenous detection and lot-to-lot consistency of routine-use biomarkers to keep your data reproducible, run after run.

## Genuine Flexability

Our industry-leading MILLIPLEX® multiplex assays for the Luminex® platform give you the FlexAbility to select your combination of biomarkers to simultaneously analyze with ease.

## Next-Level Detectability

Our ultrasensitive Single Molecule Counting (SMC®) kits for the SMCxPRO® platform take your research to the next level by detecting biomarkers down to fg/mL levels.

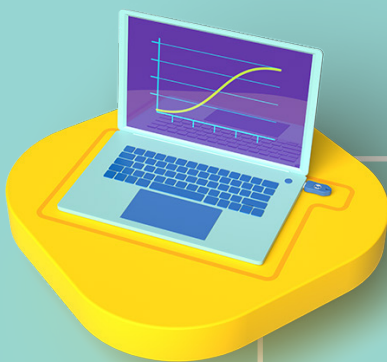
## Complete Compareability

Our Belysa® Immunoassay Curve Fitting Software helps you quickly compare your standard and sample curves with ease, confirming that your methods and plates ran consistently.

## Expert Customability

Our Custom Assay Development & Innovation (CADI) team of experienced scientists partner with you to develop custom immunoassays for your biomarker(s) of interest, accelerating your projects from discovery to clinical trials.

Keep your focus on the next stage.



# Immunoassays at a Glance

		MILLIPLEX® Multiplex Assays	Single Molecule Counting (SMC®) Assays	ELISAs
<b>Species</b>	Human	•	•	•
	Mouse	•	•	•
	Rat	•	•	•
	Non-Human Primate	•	•	•
	Canine	•		•
	Feline	•		•
	Bovine	•		•
	Chicken	•		•
	Equine	•		•
	Ovine	•		•
	Porcine	•		•
	Multi-Species	•	•	•
<b>Analytes</b>	Human	>580	>40	>1,000
	Mouse	>180	3	>300
	Rat	>90	3	>190
	Non-Human Primate	>60	1	>70
	Canine	>30	1	>30
	Feline	>15		>20
	Bovine	>10		>20
	Chicken	>10		
	Equine	>20		>20
	Ovine	>10		>5
	Porcine	>10		>30
	Multi-Species	>5	1	>5
<b>Research Areas</b>	Immunology/Inflammation	•	•	•
	Immune Response	•	•	•
	Virology	•	•	•
	Metabolism/Endocrinology	•	•	•
	Cardiovascular Disease	•	•	•
	Bone	•		•
	Cancer	•	•	•
	Neuroscience	•	•	•
	Toxicity	•		•
	Cell Signaling	•		•
<b>Kit Format</b> *only applies to MILLIPLEX® kits **Conferma® ELISAs only	Configurable (Select Your Own Analytes)*	•	-	-
	Premixed (Fixed Panel)*	•	-	-
	Bulk Premixed (Space Saver)*	•	-	-
	Custom Premix*	•	-	-
	Lot Matched at Kit Level		•	•**
<b>Qualified Sample Types</b> (see specific kits for more details)	Serum/Plasma	•	•	•
	Cell Culture Supernatants	•	•	•
	Cell/Tissue Lysates	•		•
	Cerebrospinal Fluid	•	•	•
	Urine	•		•
<b>Custom Kits and Services</b>	—	•	•	•

# New Immunoassay Products

## New Kits

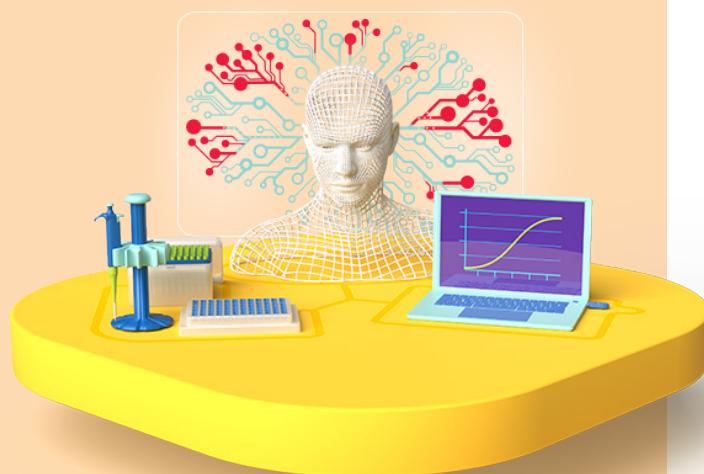
Description	Species	Cat. No.
<b>MILLIPLEX® Panels</b>		
Acute Phase Protein Panel	Porcine	PAPP1-160K
Acute Phase Protein Panel	Bovine	BAPP1-150K
Complement C5b-9 Singleplex	Human	HC5B9-140K
Panel A + B Combo Pack 76-Plex	Human	HCYTPAB-76SK
Panel A + B Combo Pack 96-Plex	Human	HCYTPAB-96SK
<b>SMC® Kits</b>		
PD-1 High Sensitivity Immunoassay Kit	Human	03-0207-00
PD-L1 High Sensitivity Immunoassay Kit	Human	03-0208-00

## Coming Soon

Description	Species
<b>MILLIPLEX® Panels</b>	
Exosome Characterization Panel	Human
PLEXpedition Screening Panel	Human
Neurodegenerative Autoantibody Panel	Human
Humanized Mouse Panel	Human, Mouse
Cytokine/Chemokine Expanded Panel	Porcine
Testosterone Singleplex	Multi-Species
<b>SMC® Kits</b>	
IFN $\lambda$ 1 (IL-29) High Sensitivity Immunoassay Kit	Human
pTau 217 High Sensitivity Immunoassay Kit	Human
pTau 231 High Sensitivity Immunoassay Kit	Human

### Spark New Research Ideas with Neuroinflammation Biomarker Assays

Did you know neuroinflammation plays a key role in the chronic processes of neurodegenerative diseases? MILLIPLEX® immunology/inflammatory biomarker panels and SMC® high sensitivity kits enable researchers to analyze serum, plasma, or cerebral spinal fluid samples for biomarkers in advance of neurodegenerative disease onset, during chronic disease, and when exploring potential therapeutics.

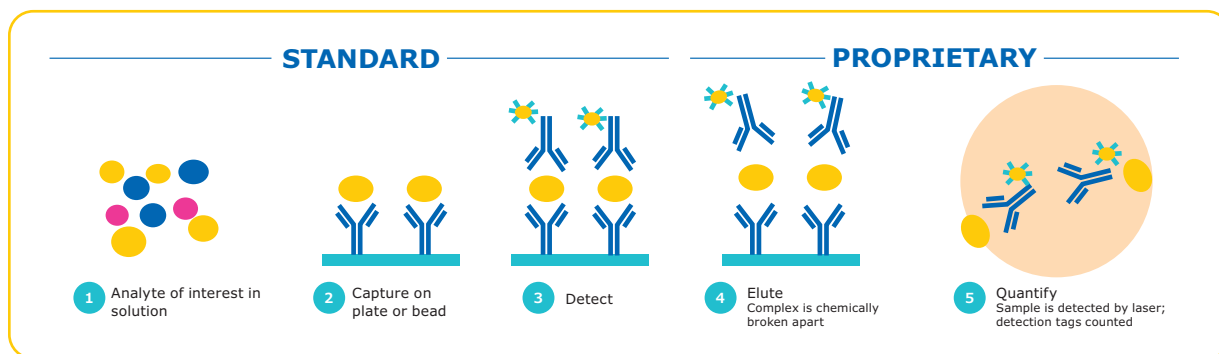


See how you can fire up your research at [SigmaAldrich.com/neuroinflammation](https://SigmaAldrich.com/neuroinflammation)

# Single Molecule Counting (SMC<sup>®</sup>) Technology

## Reduced background + increased signal

SMC<sup>®</sup> technology provides maximum immunoassay performance while following a workflow similar to traditional ELISA technology, as shown below. By combining a unique assay elution step and robust digital counting, SMC<sup>®</sup> technology achieves improved signal-to-noise ratios over traditional immunoassay technologies. The SMC<sup>®</sup> technology thus provides enhanced quantification at both low and high levels of expression on one complete system.



### Steps 2-3

Antibodies translate each biomarker into a signal

### Step 4

Fluorescent dye-labeled detection antibodies dissociate from the immunocomplex

### Step 5

On the SMCxPRO<sup>®</sup> instrument, signal is collected from free-floating fluorochromes using a rotating laser, camera, and counting individual molecules by an Avalanche Photodiode

## Digital counting improves sensitivity and dynamic range

The SMCxPRO<sup>®</sup> instrument captures the sum of all digital events counted above the background threshold. The algorithm of the SMCxPRO<sup>®</sup> instrument computes digital events across a spectrum of time series for a single standard. The digital counting of molecules thus improves the assay sensitivity and extends the assay dynamic range beyond what can be achieved with traditional methods.

## What Is Single Molecule Counting (SMC<sup>®</sup>) Technology?

Satisfy your curiosity by visiting [SigmaAldrich.com/smc-learn](https://SigmaAldrich.com/smc-learn)



# SMC<sup>®</sup> Immunoassay Kits

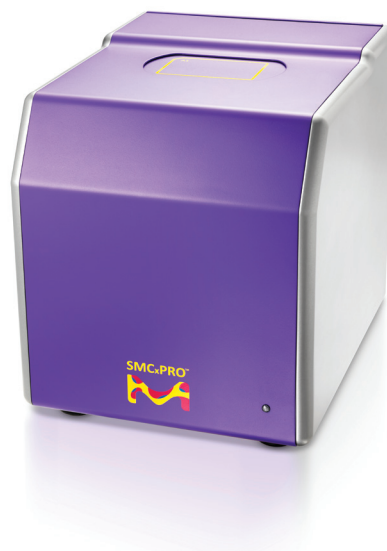
Product Description	Cat. No.	LLOQ (pg/mL) <sup>1</sup>	Species <sup>2</sup>	Sample Type <sup>3</sup>
<b>Immunology/Inflammation</b>				
IFN-α2	03-0186-00	0.06	H	P,S
IFN-β1	03-0191-00	0.15	H	P,S
IFN-γ	03-0181-00	0.03	H	P,S
IL-1α2	03-0167-00	0.12	H	P,S
IL-1β	03-0160-00	0.20	H	P,S
IL-2	03-0195-00	0.09	H	P,S
IL-22	03-0162-00	0.10	H	P,S
IL-23	03-0157-00	0.10	H	P,S
IL-4	03-0161-00	0.04	H	P,S
IL-5	03-0168-00	0.04	H	P,S
IL-6	03-0155-00	0.08	H	P,S
IL-10	03-0176-00	0.10	H	P,S
IL-12p70	03-0182-00	0.10	H	P,S
IL-13	03-0156-00	0.04	H	P,S
IL-17A/F Heterodimer	03-0177-00	2.34	H	P,S
IL-17A	03-0159-00	0.07	H	P,S
IL-17F	03-0164-00	0.20	H	P,S
IL-18	03-0190-00	0.09	H	P,S
MCP-1	03-0187-00	0.15	H	P,S
TNFα	03-0163-00	0.20	H	P,S
VEGF-A	03-0180-00	0.20	H	P,S
<b>Neuroscience</b>				
Phospho-α-Synuclein(Ser129)	03-0188-00	0.10	H	P,S,C
Total-α-Synuclein	03-0196-00	1.95	H	P,S,C
Amyloid beta 1-40	03-0145-00	5.86	H,M,R	P,C
Amyloid beta 1-42	03-0146-00	0.98	H,M,R	P,C
BDNF	03-0171-00	0.04	H	P,S,C
GFAP	03-0203-00	0.23	H	P,S,C
NF-L	03-0202-00	0.87	H	P,S,C
NPTX2	03-0199-00	0.58	H	P,S,C
SNAP-25	03-0206-00	0.26	H	P,S,C
TDP-43	03-0205-00	5.21	H	P,S,C
Phospho-Tau(Thr181)	03-0184-00	0.94	H	P,S,C
Total Tau	03-0185-00	4.69	H	P,S,C
UCHL1	03-0183-00	2.60	H	P,S,C
<b>Cancer</b>				
PD-1 <b>NEW</b>	03-0207-00	1.74	H	P,S
PD-L1 <b>NEW</b>	03-0208-00	TBD <sup>4</sup>	H	P,S
<b>Cardiovascular</b>				
cTnI	03-0154-00	0.69	H,Cy,R,C,GP	P,S
<b>Metabolism/Endocrinology</b>				
Glucagon	03-0153-00	0.78	H,M,R	P
<b>Immunogenicity</b>				
IgE <sup>5</sup>	03-0201-00	31.00	H	P,S
IgM <sup>5</sup>	03-0204-00	206.00	H	P,S
<b>Virology</b>				
SARS-CoV-2 RBD IgG <sup>6</sup>	03-0193-00	NA <sup>6</sup>	H	P,S
SARS-CoV-2 S1 IgA <sup>6</sup>	03-0197-00	NA <sup>6</sup>	H	P,S

<sup>1</sup> LLOQ: Lowest point on standard curve with CV < 20% and accuracy within 20% of expected values. <sup>2</sup> Optimized for first species type listed. Other listed species have been tested, but not optimized for peak performance. Key: H=Human; M=Mouse; R=Rat; GP=Guinea Pig; Cy=Cynomolgus Monkey; C=Canine. <sup>3</sup> Optimized for use in sample type(s) listed. Key: P=Plasma; S=Serum; L=Lysate; U=Urine; C=Cerebrospinal Fluid (CSF). <sup>4</sup> Inquire with technical support. <sup>5</sup> Plate-based assay. <sup>6</sup> Qualitative assay.

# Empower Your Biomarker Research

## Ultrasensitive Detection with the SMCxPRO® Immunoassay System

- Ultrasensitive detection down to femtogram/mL
- Lightweight (22.7 kg/50 lbs), fluidics-free benchtop instrument
- Results in hours (average assay time of ~4.5 hours and read time ~45 min)
- More than 40 SMC® assays available from a growing menu
- Bead-based and plate-based assays available
- Custom assay services and sample testing options
- Cat. No. **95-0100-00**



### Assay Performance and Instrument Specifications

Dynamic Range	> 4 logs
Precision	< 10% CV (response measurements from 30 fM calibrator, n=20)
Limit of Detection (LOD)	<1 fM
Slope	> 1.2 response/fM (determined from calibrator set: 0-300 fM of 150 kD antibody labeled with fluorophore)
Background	< 3 response/fM (determined from calibrator set: 0-300 fM of 150 kD antibody labeled with fluorophore)
Instrument Footprint	406.4 mm H x 355.6 mm W x 444.5 mm D (16"H x 14"W x 17.5"D)
Read Format	96-well custom plate optimized for SMC® technology
Regulatory Compliance	21 CFR part II and LIMS compatible
Automation Compatible	Yes

### Three Levels of Onsite Service Support for SMCxPRO® Platform

- **Total Service:** Unlimited visits including labor, travel, expenses, and all parts for any service for one year
- **Advanced Service:** Labor, travel, and expenses for one preventative maintenance and one floating visit for one year
- **Essential Service:** Labor for one preventative maintenance visit for one year

# MILLIPLEX® Analyte Index

Analyte	Page No.	Analyte	Page No.	Analyte	Page No.
<b>4-6</b>					
4-1BBL/TNFSF9 .....	15,18	BAFF/Blys .....	12,13,15	Complement C4 .....	13,16
4E-BP1 (total).....	23	BAFF/Blys (autoantibody).....	13	Complement C4b .....	13
4E-BP1 (Thr37/46) .....	23	BAX (total).....	22	Complement C5 .....	13
5'-NT/CD73 .....	15,16,18,19	BCA-1/CXCL13.....	12,13,17,18	Complement C5a .....	13
6Ckine/CCL21/Exodus-2 .....	12,13,17	Bcl-2 (total).....	22	Complement C5b-9 .....	13
		Bcl-2 (Ser70) .....	22	Complement C9 .....	13
<b>A</b>		Bcl-xL (total) .....	22	Complement Factor B .....	13
α 1-Acid Glycoprotein (AGP) ..	15,18,19,20	Bcl-xL/BAD (interaction) .....	22	Complement Factor H.....	13,16
α-1-Antitrypsin (A1AT).....	16	BDNF.....	14,16,18,19	Complement Factor I.....	13
α-1 Microglobulin .....	16	Betacellulin .....	18	Connective Tissue Growth Factor	
α-2 Macroglobulin (A2M).....	15,16,18,19	BIM .....	22	(CTGF).....	19
α-Fetoprotein (AFP).....	14,15	Blk (Tyr389) .....	23	Contactin-1 .....	16
α-MSH .....	16,18,19	BMP-9.....	15	Corticosterone.....	19
α-Synuclein.....	16	BNP .....	14	Cortisol.....	16,21
ACTH.....	14,15,17,18,19,20	BRAF (Ser446) .....	23	CRAF (Ser338).....	23
Active Caspase 8 (total).....	22	BRAK/CXCL14.....	13	Creatine Kinase Muscle (CKM) .....	19
Active Caspase 9 (total).....	22	BTLA .....	15,18	CREB (Ser133).....	23,24
ADAMTS13 .....	14			CREB (total) .....	23,24
Adiponectin .....	14,18,19	<b>C</b>		CTACK/CCL27 .....	12,13,14,18
Adipsin/Factor D .....	13,14,15,18	c-Jun (Ser73) .....	22	CTAG1B/NY-ESO-1 (autoantibody).....	15
Agouti-Related Protein (AgRP) .....	14,17	c-Kit (panTyr) .....	23	CTLA-4/CD152.....	15,18
ALK-1 (soluble) .....	18	c-Kit/SCFR (soluble) .....	16	CXCL6/GCP-2 .....	12,13,14
Akt/PKB (Ser473).....	22,23,24	c-Met/HGFR (panTyr).....	23	CXCL16.....	12,13,14,18
Akt/PKB (total) .....	22,23,24	c-Myc (total).....	23	CYFRA21-1 .....	15
Akt1 (Ser473).....	24	C-Peptide .....	14,17	Cystatin C .....	16,19,20,21
Akt1 (total) .....	24	C-Peptide 2 .....	18,19		
Akt2 (Ser474).....	24	C-Reactive Protein (CRP) .....	15,16,18,20	<b>D</b>	
Akt2 (total) .....	24	CA125 .....	15	D-dimer.....	14
Albumin .....	16,20,21	CA15-3 .....	15	DKK1 .....	15,19
ALDH1A1 .....	15	CA19-9 .....	15	DPP4 .....	15
Amphiregulin.....	18	Calbindin .....	16		
Amylin (active) .....	14,17,18,19	Carbonic Anhydrase 9 (CA9).....	15	<b>E</b>	
Amylin (total) .....	14,21	Cardiac Troponin I (cTnI).....	14,18,19	E-Cadherin .....	15,18
Amyloid beta 1-40 (Aβ 1-40) .....	16,18	Cardiac Troponin T (cTnT).....	15,18,19	EGF .....	12,15,16,18,19,20
Amyloid beta 1-42 (Aβ 1-42) .....	16,18	Cathepsin D .....	15,16	EGFR/HER1/ErbB1 (soluble) .....	13,16
Angiogenin (ANG) .....	16	Caveolin-1 (CAV-1) .....	19	EGFR2/Her2/ErbB2 (soluble) .....	16
Angiopoietin-2 .....	15,18	CCL28 .....	12,13	EGFR3/Her3/ErbB3 (soluble) .....	16
Angiostatin/Kringle .....	16	CCNB1/Cyclin B1 (autoantibody) .....	15	eIF-4B (Ser422) .....	23
Angiotensinogen (AGT).....	16	CD3ε (panTyr).....	24	eIF-4E (Ser209) .....	23
ANGPTL3 .....	14	CD14 (soluble).....	15	eIF-4G (Ser1108).....	23
ANGPTL4 .....	14	CD25/IL-2Ra .....	13,15,17,18	eIF2a (Ser51) .....	23
ANGPTL6/AGF.....	14	CD27 .....	15,18	ENA-78/CXCL5 .....	12,13
Apelin .....	14	CD28 .....	15	Endocan-1 (ESM-1).....	14,18
Apolipoprotein AI (Apo AI) .....	15,16	CD30/TNFRSF8 (soluble).....	13,15,17	Endoglin .....	15,18
Apolipoprotein AII (Apo AII).....	15	CD31/PECAM-1 (soluble) .....	15,16,18	Endostatin .....	15
Apolipoprotein B (Apo B).....	15	CD40.....	15,18	Endothelin-1 .....	15,18
Apolipoprotein CII (Apo CII).....	15	CD40L (soluble) .....	12,15,17,18,21	ENO1 (autoantibody) .....	15
Apolipoprotein CIII (Apo CIII) .....	15,16	CD44.....	15	Eotaxin/CCL11 .....	12,17,19,20,21
Apolipoprotein E (Apo E).....	15,16	CD80/B7-1 .....	15,18	Eotaxin-2/CCL24/MPIF-2.....	12,13
ApoE4.....	16	CD86/B7-2 .....	15	Eotaxin-3/CCL26 .....	12,13
APRIL .....	12,15	CD137/4-1BB/TNFRSF9 (soluble)		EpCAM.....	15
Arginase-1 (ARG1) .....	15,16,20	.....	12,15,17,18,21	Erythropoietin (EPO) .....	14,17,18,19
ATF2 (Thr71) .....	22	CD226/DNAM-1.....	15,18	ErbB1/EGFR (panTyr).....	23
ATR (total) .....	22	CEA.....	15	ErbB2/HER2 (panTyr) .....	23
AXL (soluble) .....	16	CENP-A (autoantibody) .....	13	ErbB3/HER3 (panTyr) .....	23
		CENP-B (autoantibody) .....	13	ErbB4/HER4 (panTyr) .....	23
<b>B</b>		Chk1 (Ser345) .....	22	Erk/MAPK 1/2 (Thr185/Tyr187).....	22,23,24
β-2-Microglobulin .....	16,19,20,21	Chk2 (Thr68).....	22	Erk/MAPK 1/2 (total).....	23,24
β-Endorphin .....	16,18,19	CK-MB .....	14	E-Selectin (soluble) .....	15,16,18,19
β2-Glycoprotein (autoantibody) .....	13	Clusterin.....	16,19,20,21	Estradiol .....	21
β -Tubulin (total).....	24	CNTF.....	14,17		
B7-H2/ICOSL.....	15,18	Collagen IV .....	16		
B7-H3/CD276.....	15,18	COMP (cartilage oligomeric matrix			
B7-H4/VTCN1 .....	15	protein) .....	13		
B7-H5/VISTA .....	15	C1q (autoantibody) .....	13		
B7-H6.....	15	Complement C1q .....	13		
BAD (total).....	22	Complement C2 .....	13		
BAD (Ser112) .....	22	Complement C3.....	13,16		
		Complement C3b .....	13		



# MILLIPLEX® Analyte Index (continued)

Analyte	Page No.	Analyte	Page No.	Analyte	Page No.
<b>F</b>					
FABP1	14,16	HCGβ	15	IL-5	12,17,19,20,21
FABP3	14,16,19	Hck (Tyr411)	23	IL-6	12,14,15,17,18,19,20,21
FABP4	14	HE4	15	IL-6 (autoantibody)	13
FADD (Ser194)	23	Hepsin	15	IL-6R (soluble)	13,17
Fas Ligand (sFasL) (soluble)	12,13,15,17,18,21	HER2/ErbB2 (autoantibody)	15	IL-6Ra (soluble)	16
Fas/TNFRSF6 (soluble)	12,13,15,17,20	HGF	14,15,18	IL-7	12,17,20
Ferritin	15,16	HGFR/c-Met (soluble)	16	IL-8/CXCL8	12,14,15,17,20,21
Fetuin A	15,16	HIF-1α (autoantibody)	15	IL-8/CXCL8 (autoantibody)	13
FGF-1/FGF-acidic	15	HMGB1	12,13	IL-9	12,17
FGF-2/FGF-basic	12,15,17,18,20,21	HSP27 (Ser78)	22	IL-10	12,14,17,18,19,20,21
FGF-19	14	HSP60 (autoantibody)	15	IL-10 (autoantibody)	13
FGF-21	14,18,19	HSP70	14	IL-11	12,13,17
FGF-23	14,15,19	Human Serum Albumin (HSA)	16	IL-12	20
FGFR1 (panTyr)	23	HVEM	15,18	IL-12 (p40)	12,17,20
FGL1/epasocin	15	<b>I</b>			
Fgr (Tyr412)	23	I-309/CCL1	12,13	IL-12 (p40) (autoantibody)	13
Fibrinogen	15,20	ICAM-1 (soluble)	13,14,16,18,19	IL-12 (p70)	12,17,19,20
Fibroblast Activation Protein (FAP)	15	ICOS	15	IL-12/23 (p40)	21
Flt3 Ligand	12,20	IDO1	15	IL-13	12,17,19,20,21
Flt3 (panTyr)	23	IFNα2	12,13,17,20	IL-14/α-Taxilin	13
Follistatin (FST)	15,18	IFNα2 (autoantibody)	13	IL-15	12,14,17,18,19,20,21
Follistatin-like Protein 1 (FSTL1)	14,18,19	IFNβ	12,13	IL-15 (autoantibody)	13
Fractalkine/CX3CL1	12,14,17,19,20,21	IFNβ (autoantibody)	13	IL-16	12,13,17,20,21
FSH	14,17,18,19,21	IFNβ1	17	IL-17A/CTLA8	12,17,18,19,20,21
Fyn (Tyr420)	23	IFNγ	12,13,17,18,19,20,21	IL-17A/CTLA8 (autoantibody)	13
<b>G</b>					
Galectin-1	15,18	IFNγ (autoantibody)	13	IL-17A/F	17
Galectin-1 (GAL1) (autoantibody)	15	IFNγ Receptor 1 (IFNGR1)	13	IL-17E/IL-25	12,17,21
Galectin-3	15,18	IFNε	13	IL-17F	12,17
Galectin-3 (GAL3) (autoantibody)	15	IFNω	12,13	IL-17F (autoantibody)	13
GAPDH (total)	24	IFNω (autoantibody)	13	IL-18	12,13,14,17,19,20,21
G-CSF	12,15,17,18,19,20,21	IgA	14,18	IL-18 (autoantibody)	13
G-CSF (autoantibody)	13	IgE	14	IL-18BPα	13
GDF-11	14	IgG1	14,18	IL-19	13
GDF15	14,15	IgG2	14	IL-20	12,13,17
GDNF	16	IgG2a	18	IL-21	12,13,17,20,21
GH	14,17,18,19,21	IgG2b	18	IL-22	12,17,21
Ghrelin (active)	14,17,18,19,21	IgG3	14,18	IL-22 (autoantibody)	13
GIP (total)	14,17,18,19,21	IgG4	14	IL-23	12,13,17,21
GITR	15,18	IgM	14,18	IL-24	12,13
GITRL	15	IκBα (Ser32)	23	IL-27	12,17
Glial Fibrillary Acidic Protein (GFAP)	16	IKKα/β (Ser177/181)	23	IL-28A/IFNλ2	12,13,17,21
GLP-1 (active)	14,17,18,19,21	IL-1α	12,14,17,19,20,21	IL-28B/IFNλ3	12,13,17
GLP-1 (total)	14,18,19	IL-1α (autoantibody)	13	IL-29/IFNλ1	12,13
Glucagon	14,17,18,19,21	IL-1β	12,14,15,17,18,19,20,21	IL-31	12,17,21
GM-CSF	12,13,17,19,20,21	IL-1RI (soluble)	13,17	IL-32α	13
GnRH	14,18	IL-1RII (soluble)	13,17	IL-33/NF-HEV (mature)	12,13,17,21
GOT1	20	IL-1Ra	12,17,20,21	IL-34	12,13
GP130 (soluble)	13,17	IL-2	12,17,19,20,21	IL-35	12,13
Granulysin	15	IL-2 (autoantibody)	13	IL-36β/IL-1F8	13
Granzyme A	12,17,21	IL-2Ra (soluble)	13,15,17,18	IL-36Ra/IL-1F5	20
Granzyme B	12,14,15,17,18,21	IL-3	12,17	IL-37/IL-1F7	13
GROα/CXCL1	12,17,18,19,20	IL-3 (autoantibody)	13	IL-38/IL-1F10	13
GSK3α (total)	22	IL-4	12,17,19,20,21	Insulin	14,15,17,18,19,21
GSK3α (Ser21)	22	IL-4 (autoantibody)	13	IP-10/CXCL10	12,16,17,19,20,21
GSK3β (total)	22	IL-4R (soluble)	13,17	IR (total)	22
GSK3β (Ser9)	22	<b>J</b>			
GSTα	16,20	Jag1	14,18	IR (Tyr1162/1163)	22
<b>H</b>					
H2AX (Ser139)	22	JNK/SAPK1 (Thr183/Tyr185)	22,23,24	Irisin	14,18,19
Haptoglobin	15,18,19,20	JNK/SAPK1 (total)	23,24	IRS1 (Ser636)	22
HB-EGF	15	Jo-1 (autoantibody)	13	IRS1 (total)	22
HCC-1/CCL14	13	<b>I-TAC/CXCL11</b>			
HCC-4/CCL16	13				

# MILLIPLEX® Analyte Index (continued)

Analyte	Page No.	Analyte	Page No.	Analyte	Page No.
<b>K</b>		mTOR (Ser2448) .....	22,24	Periostin .....	15
Kallikrein-6 .....	15,16	mTOR (total) .....	22,24	Progranulin (pGRN) .....	15
KC-like Protein .....	20	Mucin-1 (MUC1) (autoantibody) .....	15	PL-12 (Alanyl-tRNA Synthetase) (autoantibody) .....	13
KC/GRO/CINC-1/CXCL1 .....	17,18,19,20	Myeloperoxidase (MPO) .....	14,15,16	Placental Growth Factor 2 .....	18
KIM-1 .....	16,19,20,21	Myeloperoxidase (MPO) (autoantibody) .....	13	Placental Growth Factor (PLGF) .....	14,15
Ku (autoantibody) .....	13	Myoglobin .....	14	Platelet Factor 4 (PF4)/CXCL4 .....	15
<b>L</b>		Myosin Light Chain 3 (MYL3) .....	19	PF4 (autoantibody) .....	13
Lactotransferrin (LTF) .....	14	Myostatin/GDF8 .....	14,18,19	PM/Scf 100 (autoantibody) .....	13
LAG-3 .....	15,18	<b>N</b>		Progesterone .....	21
LAT (panTyr) .....	24	NAP-2/CXCL7 .....	13	Prolactin .....	15,18,19,21
Lck (panTyr) .....	24	NCAM (soluble) .....	16	ProMMP-9 .....	17,18
Lck (Tyr394) .....	23	NCAM1/L1CAM/CD171 .....	15	Properdin .....	13
Leptin .....	14,15,17,18,19,21	Nectin-2 .....	15	Proteinase 3 (autoantibody) .....	13
Leucine-rich alpha-2-glycoprotein 1 (LRG1) .....	15	Nectin-4 .....	15	PSA (free) .....	15
Leukemia Inhibitory Factor (LIF) .....	12,13,14,17,18,19	Neurogranin (NRGN) .....	16	PSA (total) .....	15
LH .....	14,17,18,19,20	Neuron-specific Enolase (NSE) .....	15,16	P-Selectin (soluble) .....	14,18
LIGHT .....	14,18	Neuropilin-1 (soluble) .....	16	PTEN (total) .....	22
LIX/CXCL5 .....	17,19	Neurotensin .....	16,18,19	PTEN (Ser380) .....	22
L-Selectin (soluble) .....	15	Neutrophil Elastase-2 (ELA2) .....	14	PTH .....	15,16,19
Lymphotactin/XCL1 .....	12,13	NFκB (total) .....	23	PVR/CD155 .....	15
Lyn (Tyr397) .....	23	NFκB (Ser536) .....	23	PYY (total) .....	14,17,18,19,21
<b>M</b>		NGAL/Lipocalin-2 .....	14,16,19,20,21	<b>R</b>	
Mannose-Binding Lectin (MBL) .....	13	NGF .....	14	RAGE (soluble) .....	13,16,17
MCAM/MUC18/sCD146 .....	15	Notch1 .....	18	RANKL .....	15
Mcl-1/BIM (interaction) .....	22	NOXA/Mcl-1 (interaction) .....	22	RANTES/CCL5 .....	12,16,17,19,20,21
Mcl-1 (total) .....	22	NT-proBNP .....	14	Ras (total) .....	23
MCP-1/CCL2 .....	12,14,17,18,19,20,21	<b>O</b>		RasG12D (total) .....	23
MCP-2/CCL8 .....	12,13	Oncostatin-M (OSM) .....	14,18	RasG12V (total) .....	23
MCP-3/CCL7 .....	12	Osteoactivin .....	16	RBP4 .....	16,21
MCP-4/CCL13 .....	12,13	Osteocalcin (OC) .....	15	Renin .....	16,19
MCP-5/CCL12 .....	17	Osteocrin (OSTN)/Musclin .....	14,18,19	Resistin .....	14,18
M-CSF .....	12,13,17	Osteonectin/SPARC .....	14,15,18,19	Ribosomal P (autoantibody) .....	13
M-CSFR (panTyr) .....	23	Osteopontin (OPN) .....	15,16,19,20,21	RNP (autoantibody) .....	13
MDC/CCL22 .....	12,17	Osteopontin (OPN) (autoantibody) .....	13	RNP/Sm (autoantibody) .....	13
MDH1 .....	16	Osteoprotegerin (OPG) .....	15,19	RPS6 (Ser235/Ser236) .....	22
MDM2 (total) .....	22	OX40/CD134 .....	15	RPS6 (total) .....	22
MEK1 (Ser222) .....	22,23	Oxytocin .....	16,18,19	<b>S</b>	
Melanoma Inhibitory Activity Protein (MIA) .....	15	<b>P</b>		S100B .....	16
Melatonin .....	16,19	P16-INK4a (autoantibody) .....	15	SARS-CoV-2 N .....	14
Mesothelin .....	15	p21 (total) .....	22	SARS-CoV-2 RBD .....	14
Mi-2 (autoantibody) .....	13	p38/SAPK2A/B (Thr180/Tyr182) .....	22,23,24	SARS-CoV-2 Spike S1 .....	14
MICA .....	15	p38/SAPK2A/B (total) .....	23,24	SARS-CoV-2 Spike S2 .....	14
MICB .....	15	p53 (autoantibody) .....	15	SCF .....	12,13,15,20
Midkine .....	15	p53 (Ser15) .....	22	Scf-70 (autoantibody) .....	13
MIF .....	13,15	p53 (Ser46) .....	22	Sclerostin (SOST) .....	15,19
MIG/CXCL9 .....	12,13,17	p70S6 Kinase (total) .....	22,23	SDF-1/CXCL12 .....	12,13,18,20
MIP-1α/CCL3 .....	12,13,17,18,19,20,21	p70S6 Kinase (Thr389/412) .....	22,23	SDH .....	16,20
MIP-1β/CCL4 .....	12,13,17,20,21	PAI-1 (total) .....	13,14,16,18,19	Secretin .....	14,18,19
MIP-1δ/MIP-5/CCL15 .....	12,13	Pancreatic Polypeptide (PP) .....	14,17,18,19,21	Serum Amyloid A (SAA) .....	14
MIP-2/CXCL2 .....	17,19	PARK5/UCHL1 .....	16	Serum Amyloid P (SAP) .....	15,16,18
MIP-3α/CCL20 .....	12,13,17,20,21	PARK7/DJ1 .....	16	Sex Hormone Binding Globulin (SHBG) .....	15
MIP-3β/CCL19 .....	12,13,17	PCNA (autoantibody) .....	13	Siglec-7 .....	15
MIP-4/PARC/CCL18 .....	13,16	PD-1 .....	15,18	Siglec-9 .....	15
MMP-1 .....	13	PDGF-AA .....	12,16	Sm (autoantibody) .....	13
MMP-2 .....	13,17,18	PDGF-AB/BB .....	12,16	SMAD2 (Ser465/467) .....	24
MMP-3 .....	13,17,18	PDGF-BB .....	20	SMAD3 (Ser423/425) .....	24
MMP-7 .....	13	PDGFRα (panTyr) .....	23	SMAD4 (total) .....	24
MMP-8 .....	14,17,18	PDGFRβ (panTyr) .....	23	SOX2 (autoantibody) .....	15
MMP-9 .....	13	PD-L1 .....	15,18	Src (Tyr419) .....	23
MMP-10 .....	13	PD-L2 .....	15,18	SSA/Ro52 (autoantibody) .....	13
MMP-12 .....	13,17,18	PEDF .....	16	SSA/Ro60 (autoantibody) .....	13
MMP-13 .....	13	Pentraxin-3 (PTX3) .....	15	SSB/La (autoantibody) .....	13
MPIF/CCL23 .....	12,13	Perforin .....	12,15,17,21	STAT1 (Tyr701) .....	22,23
MSK1 (Ser212) .....	22			STAT2 (Tyr690) .....	23
				STAT3 (total) .....	23,24

# MILLIPLEX® Analyte Index (continued)

Analyte	Page No.	Analyte	Page No.	Analyte	Page No.
STAT3 (Ser727).....	23	TIE1 (panTyr) .....	23	<b>U</b>	
STAT3 (Tyr705).....	22,23,24	TIE2 (panTyr) .....	23	ucMGP .....	15
STAT5A/B (total).....	23	Tie-2 (soluble) .....	16	uPAR (soluble)/CD87 .....	16
STAT5A/B (Tyr694/699).....	23	TIM-3 .....	15,18	Uromodulin .....	16
STAT6 (Tyr641).....	23	TIMP-1 .....	13,16,19,20	Uteroglobin .....	13
Substance P .....	16,18,19	TIMP-2.....	13		
Superoxide Dismutase 1 (soluble) (sSOD1) .....	16	TIMP-3.....	13	<b>V</b>	
Superoxide Dismutase 2 (soluble) (sSOD2) .....	16	TIMP-4 .....	13	VCAM-1 (soluble) .....	13,14,16
Survivin/BIRC5 (autoantibody) .....	15	Tissue Factor (TF).....	15	VEGF .....	19,20
Syk (panTyr).....	24	TLR-2 .....	15,18	VEGF-A .....	12,15,17,18,19,20,21
		TNFR1 (total) .....	23	VEGF-C.....	15,18
<b>T</b>		TNF $\alpha$ .....	12,13,14,15,17,18,19,20,21	VEGF-D.....	15,18
T3 .....	19,21	TNF $\alpha$ (autoantibody).....	13	VEGFR1/Flt-1 (panTyr) .....	23
T4 .....	19,21	TNF $\beta$ /Lymphotoxin- $\alpha$ (LTA).....	12,17,21	VEGFR1/Flt-1 (soluble).....	13,16,17
TARC/CCL17 .....	12,13,17	TNF RI (soluble) (sTNFR1) .....	13,17	VEGFR2/KDR/Flk-1 (panTyr).....	23
Tau (Total) .....	16	TNF RII (soluble) (sTNFR2) .....	13,17	VEGFR2/KDR/Flk-1 (soluble).....	13,16,17
Tau (Thr181) .....	16	TPO .....	12,13	VEGFR3/Flt-4 (panTyr).....	23
TFF-3.....	16,21	TRAIL/TNFSF10 .....	12,13,15	VEGFR3/Flt-4 (soluble) .....	13,16,17
TGF $\alpha$ .....	12,15,17,21	Transglutaminase 2 (TGM2) .....	15,16		
TGF $\beta$ 1.....	21	TRAP5 .....	15	<b>Y</b>	
TGF $\beta$ 2.....	21	TREM2 .....	16	Yes (Tyr421).....	23
TGF $\beta$ 3.....	21	Troponin I (TnI) .....	14,18,19	YKL40/CHI3L1 .....	13,15
TGF $\beta$ RII (total) .....	24	Troponin T (TnT) .....	15,18,19		
Thrombomodulin.....	15,18	TSC2 (total) .....	22	<b>Z</b>	
Thrombospondin-1 (TSP-1) .....	14	TSC2 (Ser939).....	22	ZAP-70 (panTyr).....	24
Thrombospondin-2 (TSP-2) .....	16	TSH.....	14,17,18,19,21		
		TSLP.....	12,13		
		TWEAK .....	15		

Human pp. 12-16; Non-Human Primate p. 17; Mouse pp. 17-19;  
Rat pp. 19-20; Other/Multi-Species pp. 20-21; Cell Signaling kits pp. 22-24

## Multiplex Your Research

Explore all the ways researchers are using MILLIPLEX® multiplex assays at  
[SigmaAldrich.com/milliplex-learn](http://SigmaAldrich.com/milliplex-learn)



## What's in a MILLIPLEX® kit?



# HUMAN

## Immunology

### Human Cytokine/Chemokine/ Growth Factor Panel A

☐ (Cat. No. HCYTA-60K)

38 (Cat. No. HCYTA-60K-PX38) ♦

38 (Cat. No. HCYTA-60K-PXBK38) ♦

48 (Cat. No. HCYTA-60K-PX48)

48 (Cat. No. HCYTA-60K-PXBK48)

sCD40L	IL-13 ♦
EGF ♦	IL-15 ♦
Eotaxin/CCL11 ♦	IL-17A/CTLA8 ♦
FGF-2/FGF-basic	IL-17E/IL-25 ♦
Flt3 Ligand	IL-17F ♦
Fractalkine/CX3CL1	IL-18 ♦
G-CSF ♦	IL-22 ♦
GM-CSF ♦	IL-27
GROα	IP-10/CXCL10 ♦
IFNα2 ♦	MCP-1/CCL2 ♦
IFNγ ♦	MCP-3/CCL7
IL-1α ♦	M-CSF ♦
IL-1β ♦	MDC/CCL22
IL-1RA ♦	MIG/CXCL9 ♦
IL-2 ♦	MIP-1α/CCL3 ♦
IL-3 ♦	MIP-1β/CCL4 ♦
IL-4 ♦	PDGF-AA ♦
IL-5 ♦	PDGF-AB/BB ♦
IL-6 ♦	RANTES/CCL5 ♦▲°
IL-7 ♦	TGFα
IL-8/CXCL8 ♦	TNFα ♦
IL-9	TNFβ/Lymphotoxin-α (LTA) ♦
IL-10 ♦	VEGF-A ♦
IL-12 (p40) ♦	
IL-12 (p70) ♦	

**Get both Human Panel A and Panel B premixed kits with one catalog number!**

**76-Plex (Two 38-plex premixed kits)**

Cat. No. HCYTPAB-76SK

**96-Plex (Two 48-plex premixed kits)**

Cat. No. HCYTPAB-96SK

Kits cannot be combined.

### Human Cytokine/Chemokine/ Growth Factor Panel B **NEW**

☐ (Cat. No. HCYTB-60K)

38 (Cat. No. HCYTB-60K-PX38) ♦

38 (Cat. No. HCYTB-60K-PXBK38) ♦

48 (Cat. No. HCYTB-60K-PX48)

48 (Cat. No. HCYTB-60K-PXBK48)

6Ckine/CCL21 ♦	IL-28A/IFNλ2 ♦
APRIL ♦	IL-29 /IFNλ1 ♦
BAFF/Blys ♦	IL-31 ♦
BCA-1/CXCL13 ♦	IL-33/NF-HEV (mature) ♦
CCL28	IL-34
sCD137/4-1BB/ TNFRSF9 ♦	IL-35
CTACK/CCL27 ♦	IFNβ ♦
CXCL6/GCP-2	IFNω ♦
CXCL16	I-TAC/CXCL11 ♦
ENA-78/CXCL5 ♦	LIF ♦
Eotaxin-2/CCL24/ MIPF-2 ♦	Lymphotoxin/XCL1
Eotaxin-3/CCL26 ♦	MCP-2/CCL8 ♦
sFAS/TNFRSF6 ♦	MCP-4/CCL13 ♦
sFASL ♦	MIP-1δ /MIP-5/ CCL15 ♦
Granzyme A ♦	MIP-3α/CCL20 ♦
Granzyme B ♦	MIP-3β/CCL19
HMGB1 ♦	MPIF-1/CCL23
I-309/CCL1 ♦	Perforin ♦
IL-11	SCF ♦
IL-16 ♦	SDF-1/CXCL12 ♦
IL-20 ♦	TARC/CCL17 ♦
IL-21 ♦	TPO ♦
IL-23 ♦	TRAIL/TNFSF10 ♦
IL-24	TSLP ♦

### Human High Sensitivity T Cell

☐ (Cat. No. HSTCMAG-28SK)

15 (Cat. No. HSTCMAG28SPMX13) ♦

15 (Bulk Cat. No. HSTCMAG28SPMX13BK) ♦

21 (Cat. No. HSTCMAG28SPMX21)

21 (Bulk Cat. No. HSTCMAG28SPMX21BK)

Fractalkine/CX3CL1	IL-12 (p70) ♦
GM-CSF ♦	IL-13 ♦
IFNγ ♦	IL-17A/CTLA8
IL-1β ♦	IL-21
IL-2 ♦	IL-23
IL-4 ♦	I-TAC/CXCL11
IL-5 ♦	MIP-1α/CCL3
IL-6 ♦	MIP-1β/CCL4
IL-7 ♦	MIP-3α/CCL20
IL-8/CXCL8 ♦	TNFα ♦
IL-10 ♦	

### 384-Well Human High Sensitivity T Cell

(Cat. No. HSTC384-28K)

21 (Cat. No. HSTCMAG384-PX21)

21 (Bulk Cat. No. HSTCMAG384PX21BK)

Fractalkine/CX3CL1	IL-12 (p70)
GM-CSF	IL-13
IFNγ	IL-17A/CTLA8
IL-1β	IL-21
IL-2	IL-23
IL-4	I-TAC/CXCL11
IL-5	MIP-1α/CCL3
IL-6	MIP-1β/CCL4
IL-7	MIP-3α/CCL20
IL-8/CXCL8	TNFα
IL-10	

### Human Th17

(Cat. No. HTH17MAG-14K)

25 (Cat. No. HT17MG-14K-PX25)

25 (Bulk Cat. No. HT17MAG14PMX25BK)

GM-CSF	IL-17E/IL-25
IFNγ	IL-17F
IL-1β	IL-21
IL-2	IL-22
IL-4	IL-23
IL-5	IL-27
IL-6	IL-28A/IFNλ2
IL-9	IL-31
IL-10	IL-33/NF-HEV (mature)
IL-12 (p70)	MIP-3α/CCL20
IL-13	TNFα
IL-15	TNFβ/Lymphotoxin-α (LTA)
IL-17A/CTLA8	

### Human CD8+ T Cell

☐ (Cat. No. HCD8MAG-15K)

17 (Cat. No. HCD8MAG15K17PMX)

17 (Bulk Cat. No. HCD8MAG15K17BK)

sCD137/4-1BB/ TNFRSF9	IL-4
sFAS/TNFRSF6	IL-5
sFasL	IL-6
GM-CSF	IL-10
Granzyme A	IL-13
Granzyme B	MIP-1α/CCL3
IFNγ	MIP-1β/CCL4
IL-2	Perforin
	TNFα

## MILLIPLEX® Immunology Kits

Profile more immune biomarkers faster with MILLIPLEX® multiplex immunoassays. Learn more at [SigmaAldrich.com/milliplex-immunology](http://SigmaAldrich.com/milliplex-immunology)



### Legend key for MILLIPLEX® kits

† Analytes which cannot be plexed together:  
– Active and total  
– Free and total

♦ Available in Cat. No. listed

▼ Premix panel only

Bulk indicates Space Saver Packaging

▲ These analytes cannot be plexed with other analytes in this panel in serum/plasma

♦ Requires a protease inhibitor during sample collection

■ Requires sample extraction

\*\* No standard/QC; antibody levels are reported as MFIs (Median Fluorescence Intensities)

● Serum/Plasma only

★ Tissue Culture samples only

^ Competitive assay format

☐ Available for custom premix

° Analyte requires a different sample dilution from others in panel

⊙ Analyte cannot be measured in serum

# Requires sample acidification

§ Analyte cannot be measured in plasma

u Urine only

**Human Interferon** **NEW**

(Cat. No. HIFN-130K)

9 (Cat. No. HIFN-130K-PMX9)

IFN $\alpha$ 2	IFN $\epsilon$
IFN $\beta$	IFN $\omega$
IFN $\gamma$	IL-28A/IFN $\lambda$ 2
IFN $\gamma$ Receptor 1 (IFNGR1)	IL-28B/IFN $\lambda$ 3 IL-29/IFN $\lambda$ 1

**Human Soluble Cytokine Receptor**

(Cat. No. HSCRMAG-32K)

14 (Cat. No. HSCRMAG32KPX14)

14 (Bulk Cat. No. HSCRMAG32KPMX14BK)

sCD30	sIL-6R
sEGFR/sHER1/ErbB1	sRAGE
sGP130	sTNF RI
sIL-1RI	sTNF RII
sIL-1RII	sVEGFR1/sFlt-1
sIL-2Ra	sVEGFR2/sKDR/sFlk-1
sIL-4R	sVEGFR3/sFlt-4

**Human Cytokine/Chemokine Panel II**

20 (Cat. No. HCP2MAG-62K)

23 (Cat. No. HCP2MAG-62K-PX23)

23 (Bulk Cat. No. HCP2MAG62KPX23BK)

6Ckine/CCL21/ Exodus-2	IL-28A/IFN $\lambda$ 2 IL-33/NF-HEV (mature)
BCA-1/CXCL13	LIF
CTACK/CCL27	MCP-2/CCL8
ENA-78/CXCL5	MCP-4/CCL13
Eotaxin-2/CCL24/ MPIF-2	MIP-1 $\delta$ /MIP-5/CCL15
Eotaxin-3/CCL26	SCF
I-309/CCL1	SDF-1/CXCL12
IL-16	TARC/CCL17
IL-20	TPO
IL-21	TRAIL/TNFSF10
IL-23	TSLP

**Human Cytokine/Chemokine Panel III**

(Cat. No. HCP3MAG-63K)

HCC-1/CCL14▲	M-CSF
IL-11	MIG/CXCL9
IL-29/IFN $\lambda$ 1	MIP-3 $\alpha$ /CCL20
I-TAC/CXCL11	MIP-3 $\beta$ /CCL19
CXCL6/GCP-2	NAP-2/CXCL7▲
Lymphotactin/XCL1	

**Human Cytokine/Chemokine Panel IV**

20 (Cat. No. HCP4MAG-64K)

20 (Cat. No. HCY4MG-64K-PX20)

20 (Bulk Cat. No. HCP4MG64KPX20BK)

BAFF/Blys	IL-28B/IFN $\lambda$ 3
BRAK/CXCL14	IL-32 $\alpha$
CCL28	IL-34
CXCL16	IL-35
HCC-4/CCL16	IL-36 $\beta$ /IL-1F8
HMGB1●	IL-37/IL-1F7
IFN $\beta$	IL-38/IL-1F10
IL-14/ $\alpha$ -Taxilin	MIP-4/PARC/CCL18
IL-19	MPIF/CCL23
IL-24	YKL40/CHI3L1

**Human IL-18 Singleplex**

(Cat. No. HIL18MAG-66K)

IL-18

**Human Complement Expanded Panel 1**

20 (Cat. No. HCMPEX1-19K)

Adipsin/Factor D	C9
C2	Factor I
C4b	Mannose-Binding Lectin (MBL)
C5	Properdin
C5a	

**Human Complement Panel 2**

20 (Cat. No. HCMP2MAG-19K)

C1q	C4
C3	Factor B
C3b	Factor H

**Human Complement C5b-9 Singleplex** **NEW**

(Cat. No. HC5B9-140K)

C5b-9

**Human MMP Panel 1**

(Cat. No. HMMP1MAG-55K)

MMP-3	MMP-13
MMP-12	

**Human MMP Panel 2**

(Cat. No. HMMP2MAG-55K)

MMP-1	MMP-9
MMP-2	MMP-10
MMP-7	

**Human TIMP Panel 1 (Serum/Plasma samples)**

(Cat. No. HTMP1MAG-54K)

TIMP-1	TIMP-2
--------	--------

**Human TIMP Panel 2 (Cell culture samples)**

(Cat. No. HTMP2MAG-54K)

TIMP-1	TIMP-3
TIMP-2	TIMP-4

**Human Fibrosis Panel 1**

(Cat. No. HFIB1-100K)

COMP	Uteroglobin
IL-18BP $\alpha$	

**Immune Response****Human Autoimmune Autoantibody\*\***

(Cat. No. HAIAB-10K)

**QUALITATIVE KIT**

$\beta$ 2-Glycoprotein	PM/Scl 100
C1q	Proteinase 3
CENP-A	Ribosomal P
CENP-B	RNP
Jo-1	RNP/Sm
Ku	Scl-70
Mi-2	Sm
Myeloperoxidase (MPO)	SSA/Ro52
PCNA	SSA/Ro60
PL-12 (Alanyl-tRNA Synthetase)	SSB/La

**Human Cytokine Autoantibody Expanded IgG, IgA, and IgM\*\***

IgG (Cat. No. HCYTABG-17K)

IgA (Cat. No. HCYTABA-17K)

IgM (Cat. No. HCYTABM-17K)

**QUALITATIVE KIT**

BAFF/Blys	IL-8/CXCL8
G-CSF	IL-10
GM-CSF	IL-12 (p40)
IFN $\alpha$ 2	IL-15
IFN $\beta$	IL-17A/CTLA8
IFN $\gamma$	IL-17F
IFN $\omega$	IL-18
IL-1 $\alpha$	IL-22
IL-2	Osteopontin
IL-3	PF4
IL-4	TNF $\alpha$
IL-6	

**Human Sepsis Panel 1**

(Cat. No. HSP1MAG-63K)

sFAS/TNFRSF6	MIF
sFasL	PAI-1 (total)
sICAM-1	sVCAM-1

**MILLIPLEX® Autoantibody Profiling**Discover the benefits of multiplexing autoantibodies at [SigmaAldrich.com/milliplex-autoab](http://SigmaAldrich.com/milliplex-autoab)

**Human Sepsis Panel 2**

(Cat. No. HSP2MAG-63K)

Granzyme B	MIP-1α/CCL3
HSP70	MIP-1β/CCL4
IL-1α	MMP-8
IL-8/CXCL8	

**Human Sepsis Panel 3**

(Cat. No. HSP3MAG-63K)

Lactotransferrin (LTF)	Resistin
Neutrophil Elastase-2 (ELA2)	Thrombospondin-1 (TSP-1)
NGAL/Lipocalin-2	

**Human Immunoglobulin Isotyping**

☑ (Cat. No. HGAMMAG-301K)

IgA	IgG3
IgG1	IgG4
IgG2	IgM

**Human IgE – Singleplex**

(Cat. No. HGAMMAG-303E)

IgE

**Virology****SARS-CoV-2 Antigen Panel 1 IgA\*\***

(Cat. No. HC19SERA1-85K)

**QUALITATIVE KIT**

SARS-CoV-2 N	SARS-CoV-2 Spike S1
SARS-CoV-2 RBD	SARS-CoV-2 Spike S2

**SARS-CoV-2 Antigen Panel 1 IgG\*\***

(Cat. No. HC19SERG1-85K)

**QUALITATIVE KIT**

SARS-CoV-2 N	SARS-CoV-2 Spike S1
SARS-CoV-2 RBD	SARS-CoV-2 Spike S2

**SARS-CoV-2 Antigen Panel 1 IgM\*\***

(Cat. No. HC19SERM1-85K)

**QUALITATIVE KIT**

SARS-CoV-2 N	SARS-CoV-2 Spike S1
SARS-CoV-2 RBD	SARS-CoV-2 Spike S2

**For Research Use Only. Not For Use In Diagnostic Procedures.****Metabolism/Endocrinology****Human Adipokine Panel 1 (Serum/Plasma samples)**

(Cat. No. HADK1MAG-61K)

Adiponectin	PAI-1 (total)
Adipsin/Factor D	Resistin
NGAL/Lipocalin-2	

**Human Adipokine Panel 2 (Serum/Plasma samples)**

(Cat. No. HADK2MAG-61K)

IL-1β	Leptin
IL-6	MCP-1/CCL2
IL-8/CXCL8	NGF
Insulin	TNFα

**Human Adipocyte (Cell culture samples)**

(Cat. No. HADCYMAG-61K)

Adiponectin	MCP-1/CCL2
HGF	NGF
IL-1β	PAI-1 (total)
IL-6	Resistin
IL-8/CXCL8	TNFα
Leptin	

**Human Metabolic Hormone V3**

(Cat. No. HMH3-34K)

Amylin (active) †	Insulin
Amylin (total) †	Leptin
C-Peptide	MCP-1/CCL2
Ghrelin (active) †	Pancreatic Polypeptide (PP)
GIP (total)	PYY (total)
GLP-1 (active) †	Secretin
GLP-1 (total) †	TNFα
Glucagon †	
IL-6	

**Human Myokine**

(Cat. No. HMYOMAG-56K)

Apelin	IL-15
BDNF	Irisin
Erythropoietin (EPO)	LIF
FABP3	Myostatin/GDF8
FGF-21	Oncostatin-M (OSM)
Fractalkine/CX3CL1	Osteocrin (OSTN)/Musclin
FSTL1	Osteonectin/SPARC
IL-6	

**Human Aging Panel 1**

(Cat. No. HAGE1MAG-20K)

CTACK/CCL27	IL-6
FGF-21	IL-10*
GDF-11	IL-18
GDF15	Jag1
GnRH	Leptin

**Human Liver Protein**

(Cat. No. HLPPMAG-57K)

α-Fetoprotein (AFP)	FGF-19
ANGPTL3	FGF-21
ANGPTL4	FGF-23
ANGPTL6	HGF
FABP1	

**Human IGF Binding Protein**

(Cat. No. HIGFBMAG-53K)

IGFBP1	IGFBP5
IGFBP2	IGFBP6
IGFBP3°	IGFBP7
IGFBP4	

**Human IGF■**

(Cat. No. HIGFMAG-52K)

IGF-1	IGF-2
-------	-------

**Human Pituitary Panel 1**

(Cat. No. HPTP1MAG-66K)

ACTH	FSH
Agouti-Related Protein (AgRP)	GH
CNTF	LH
	TSH

**Cardiovascular****Human CVD Panel 1**

(Cat. No. HCVD1MAG-67K)

BNP	LIGHT
CK-MB	NT proBNP
CXCL6/GCP-2	Oncostatin-M (OSM)
CXCL16	Placental Growth Factor (PIGF)
Endocan-1 (ESM-1)	Troponin I (TnI)
FABP3	
FABP4	

**Human CVD Panel 2**

(Cat. No. HCVD2MAG-67K)

ADAMTS13	Myoglobin
D-dimer <sup>5</sup>	NGAL/Lipocalin-2
GDF15	sP-Selectin
sICAM-1	Serum Amyloid A
Myeloperoxidase (MPO)	sVCAM-1

**Legend key for MILLIPLEX® kits**

- † Analytes which cannot be plexed together:
  - Active and total
  - Free and total
- ◆ Available in Cat. No. listed
- ▼ Premix panel only
- Bulk indicates Space Saver Packaging
- ▲ These analytes cannot be plexed with other analytes in this panel in serum/plasma

- ‡ Requires a protease inhibitor during sample collection
- Requires sample extraction
- \*\* No standard/QC; antibody levels are reported as MFIs (Median Fluorescence Intensities)
- Serum/Plasma only
- ★ Tissue Culture samples only

- ^ Competitive assay format
- ☑ Available for custom premix
- Analyte requires a different sample dilution from others in panel
- ⊙ Analyte cannot be measured in serum
- # Requires sample acidification
- <sup>5</sup> Analyte cannot be measured in plasma
- <sup>u</sup> Urine only

### Human CVD Panel 3 (Acute Phase)

(Cat. No. HCVD3MAG-67K)

α-1-Acid Glycoprotein (AGP)	Haptoglobin
α-2-Macroglobulin	sL-Selectin
Adipsin/Factor D	Platelet Factor 4 (PF4)/CXCL4
CRP	Serum Amyloid P (SAP)
Fetuin A	
Fibrinogen ⊕	

### Human CVD Panel 4

(Cat. No. HCVD4MAG-67K)

sCD31/sPECAM-1	Thrombomodulin
sE-Selectin	Tissue Factor (TF)
Follistatin (FST)	Troponin T (TnT)
Pentraxin-3 (PTX3)	

### Human CVD Panel 6

(Cat. No. HCVD6MAG-67K)

sCD14	MCAM/MUC18
DPP4	Progranulin (pGRN)
Endostatin	ucMGP
LRG1	

### Human Apolipoprotein

(Cat. No. APOMAG-51K)

Apo AI	Apo CII
Apo AII	Apo CIII
Apo B	Apo E

## Bone

### Human Bone

(Cat. No. HBNMAG-51K)

ACTH	Osteocalcin (OC)
DKK1	Osteopontin (OPN)
FGF-23	Osteoprotegerin (OPG)
IL-1β	PTH
IL-6	Sclerostin (SOST)
Insulin	TNFA
Leptin	

### Human RANKL – Singleplex

(Cat. No. HRNKL MAG-51K-01)

RANKL
-------

## Cancer

### Human Immuno-Oncology Checkpoint Protein Panel 1

(Cat. No. HCKP1-11K)

①7 (Cat. No. HCKP1-11K-PX17)

①7 (Bulk Cat. No. HCKP1-11K-PXBK17)

BTLA	HVEM
CD27	ICOS
CD28	LAG-3
CD40	PD-1
CD80/B7-1	PD-L1
CD86/B7-2	PD-L2
CTLA-4/CD152	TIM-3
GITR	TLR-2
GITRL	

### Human Immuno-Oncology Checkpoint Protein Panel 2

(Cat. No. HCKP2-11K)

4-1BBL/TNFSF9	FGL1/Hepassocin
5'-NT/CD73	Galectin-1
APRIL	Galectin-3
Arginase-1	Granulysin
B7-H2/ICOSL	Granzyme B
B7-H3/CD276	IDO1
B7-H4/VTCN1	MICA
B7-H5/VISTA	MICB
B7-H6	Nectin-2
BAFF/BLyS	Nectin-4
CD25/IL-2Rα	OX40/CD134
CD30/TNFRSF8	Perforin
CD40L	PVR/CD155
CD137/4-1BB	Siglec-7
CD226/DNAM-1	Siglec-9
E-Cadherin	

### Human Cancer Autoantibody\*\*

(Cat. No. HCABMAG-13K)

QUALITATIVE KIT

CCNB1/Cyclin B1	IGF2BP2/IMP2
CTAG1B/NY-ESO-1	IGF2BP3/IMP3
ENO1	Mucin-1 (MUC1)
Galectin-1 (GAL1)	P16-INK4a
Galectin-3 (GAL3)	p53
HER2/ErbB2	SOX2
HIF-1α	Survivin/BIRC5
HSP60	

### Human Circulating Cancer Biomarker Panel 1

(Cat. No. HCCBP1MAG-58K)

α-Fetoprotein (AFP)	IL-8/CXCL8
CA125	Leptin
CA15-3	MIF
CA19-9	Osteopontin (OPN)
CEA	Prolactin
CYFRA21-1	PSA (free)†
sFAS/TNFRSF6	PSA (total)†
sFasL	SCF
FGF-2/FGF-basic	TGFα
HCGβ	TNFA
HE4	TRAIL/TNFSF10
HGF	VEGF-A
IL-6	

### Human Circulating Cancer Biomarker Panel 3

(Cat. No. HCCBP3MAG-58K)

Cathepsin D	Melanoma Inhibitory Activity (MIA)
Ferritin	Myeloperoxidase (MPO)
Fibroblast Activation Protein (FAP)	Sex Hormone Binding Globulin (SHBG)
Galectin-3	
IGFBP3 ⊖	

### Human Circulating Cancer Biomarker Panel 4

(Cat. No. HCCB4MAG-58K)

ALDH1A1	Kallikrein-6
Carbonic Anhydrase 9 (CA9)	Mesothelin
CD44	Midkine
EpCAM	NCAML1/L1CAM/CD171
Hepsin	Transglutaminase 2 (TGM2)

### Human Cancer/Metastasis Biomarker Panel 1

(Cat. No. HCMBMAG-22K)

DKK1	Osteoprotegerin (OPG)
GDF15	Periostin
Neuron-specific Enolase (NSE)	TRAP5
Osteonectin/SPARC	TWEAK
	YKL40/CHI3L1

### Human Angiogenesis/Growth Factor Panel 1

(Cat. No. HAGP1MAG-12K)

Angiopoietin-2	HB-EGF
BMP-9	HGF
EGF	IL-8/CXCL8
Endoglin	Leptin
Endothelin-1	Placental Growth Factor (PIGF)
FGF-1/FGF-acidic	VEGF-A
FGF-2/FGF-basic	VEGF-C
Follistatin (FST)	VEGF-D
G-CSF	

## MILLIPLEX® Cancer Kits

See how our kits are advancing cancer and immuno-oncology research at [SigmaAldrich.com/milliplex-cancer](https://SigmaAldrich.com/milliplex-cancer)



**Human Angiogenesis Panel 2**

(Cat. No. HANG2MAG-12K)

Angiostatin/Kringle	sIL-6Ra
sAXL	sNeuropilin-1 (sNRP-1)
sCD31/sPECAM-1	Osteopontin (OPN)
sc-Kit/sStem Cell Factor Receptor (SCFR)	PDGF-AB/BB
sE-Selectin	Thrombospondin-2 (TSP-2)
sEGFR/sHER1/sErbB1	sTIE-2
sHER2/sEGFR2/sErbB2	suPAR
sHER3/sEGFR3/sErbB3	sVEGFR1/sFlt-1
shGFR/sc-Met	sVEGFR2/sKDR/sFlk-1
	sVEGFR3/sFlt-4

**Neuroscience****Human Amyloid Beta and Tau (CSF samples)**

(Cat. No. HNABTMAG-68K)

Amyloid beta 1-40	pTau (Thr181)
Amyloid beta 1-42	Tau (total)

**Human Neuroscience Panel 1 (CSF samples)**

(Cat. No. HNS1MAG-95K)

α-Synuclein	PARK5/UCHL1
Glial Fibrillary Acidic Protein (GFAP)	PARK7/DJ1
Neuron-specific Enolase (NSE)	Transglutaminase 2 (TGM2)

**Human Neuroscience Panel 2**

(Cat. No. HNS2MAG-95K)

Angiogenin (ANG) <sup>†</sup>	Ferritin
ApoE4 <sup>†</sup>	Neurogranin (NRGN)
FABP3	TREM2

**Human Neurodegenerative Disease Panel 1**

(Cat. No. HNDG1MAG-36K)

α-2-Macroglobulin	Complement Factor C3
Apo AI	Complement Factor H (CFH)
Apo CIII	
Apo E	

**Human Neurodegenerative Disease Panel 2**

(Cat. No. HNDG2MAG-36K)

α-1-Antitrypsin (A1AT)	MIP-4/PARC/CCL18
C4	PEDF
CRP	Serum Amyloid P (SAP)

**Human Neurodegenerative Disease Panel 3**

(Cat. No. HNDG3MAG-36K)

BDNF	PAI-1 (total)
Cathepsin D	PDGF-AA
sICAM-1	PDGF-AB/BB
Myeloperoxidase (MPO)	RANTES/CCL5
sNCAM	sVCAM-1

**Human Neurodegenerative Disease Panel 4 (CSF samples)**

(Cat. No. HNDG4MAG-36K)

Amyloid beta 1-40	sRAGE
Amyloid beta 1-42	S100B
GDNF	

**Human Neurological Disorders Panel 3**

(Cat. No. HND3MAG-39K)

Angiotensinogen (AGT)	Osteopontin (OPN)
Contactin-1	Soluble Superoxide Dismutase 1 (sSOD1)
Fetuin A <sup>◦</sup>	Soluble Superoxide Dismutase 2 (sSOD2)
Kallikrein-6	

**Human Neuropeptide ■ ^**

(Cat. No. HNP MAG-35K)

α-MSH	Oxytocin
β-Endorphin	Substance P
Neurotensin	

**Human Circadian Stress ■ ^**

(Cat. No. HNC SMAG-35K)

Cortisol	Melatonin
----------	-----------

**Toxicity****Human Kidney Injury Panel 1 (Urine samples)**

(Cat. No. HKI1MAG-99K)

Calbindin	KIM-1
Collagen IV	Renin
GSTα	TFF-3
IP-10/CXCL10	TIMP-1

**Human Kidney Injury Panel 2 (Urine samples)**

(Cat. No. HKI2MAG-99K)

α-1-Microglobulin	EGF
Albumin	NGAL/Lipocalin-2
Clusterin	Osteopontin (OPN)
Cystatin C	

**Human Kidney Injury Panel 4 (Serum/Plasma samples)**

(Cat. No. HKI4MAG-99K)

EGF	Osteopontin (OPN)
FABP1	PTH
IP-10/CXCL10	Renin
KIM-1	

**Human Kidney Injury Panel 5 (Serum/Plasma samples)**

(Cat. No. HKI5MAG-99K)

α-1-Microglobulin	Osteoactivin
Collagen IV	TIMP-1
NGAL/Lipocalin-2	Uromodulin

**Human Kidney Injury Panel 6 (Serum/Plasma samples)**

(Cat. No. HKI6MAG-99K)

β-2-Microglobulin	Cystatin C
Clusterin	RBP4

**Human Liver Injury**

(Cat. No. HLINJ MAG-75K)

5'NT/CD73	MDH1
ARG1	SDH
GSTα	

**Explore Biomarkers for Alzheimer's Disease Research**

Learn how to combine multiplex and high sensitivity assay analysis for AD biomarker studies at [SigmaAldrich.com/immunoassays-AD](https://www.sigmaaldrich.com/immunoassays-AD)

**Legend key for MILLIPLEX® kits**

- † Analytes which cannot be plexed together:
  - Active and total
  - Free and total
- ◆ Available in Cat. No. listed
- ▼ Premix panel only
- Bulk indicates Space Saver Packaging
- ▲ These analytes cannot be plexed with other analytes in this panel in serum/plasma

- ▮ Requires a protease inhibitor during sample collection
- Requires sample extraction
- \*\* No standard/QC; antibody levels are reported as MFIs (Median Fluorescence Intensities)
- Serum/Plasma only
- ★ Tissue Culture samples only

- ^ Competitive assay format
- ⊗ Available for custom premix
- Analyte requires a different sample dilution from others in panel
- ⊙ Analyte cannot be measured in serum
- # Requires sample acidification
- ♠ Analyte cannot be measured in plasma
- ⊙ Urine only



# PRIMATE

## Immunology

### Non-Human Primate Cytokine/Chemokine /Growth Factor Panel A

- ☐ (Cat. No. PRCYTA-40K)
- 38 (Cat. No. PRCYTA-40K-PX38)♦
- 38 (Cat. No. PRCYTA-40K-BK38)♦
- 48 (Cat. No. PRCYTA-40K-PX48)
- 48 (Cat. No. PRCYTA-40K-BK48)

BCA-1/CXCL13	IL-15♦
sCD137/4-1BB/ TNFRSF9♦	IL-16
sCD40L♦	IL-17A/CTLA8♦
Eotaxin/CCL11	IL-17E/IL-25
sFASL♦	IL-18♦
FGF-2/FGF-basic	IL-22♦
Fractalkine/CX3CL1	IL-23♦
G-CSF♦	IL-28A/IFNλ2
GM-CSF♦	IL-31
Granzyme A♦	IL-33/NF-HEV (mature)♦
Granzyme B♦	IP-10/CXCL10♦
IFNα2♦	I-TAC/CXCL11♦
IFNγ♦	MCP-1/CCL2♦
IL-1α	MIG/CXCL9♦
IL-1β♦	MIP-1α/CCL3♦
IL-1RA♦	MIP-1β/CCL4♦
IL-2♦	MIP-3α/CCL20♦
IL-4♦	Perforin♦
IL-5♦	RANTES/CCL5♦▲*
IL-6♦	TGFα♦
IL-7♦	TNFα♦
IL-8/CXCL8♦	TNFβ/LTA
IL-10♦	VEGF-A♦
IL-12 (p70)♦	

## Metabolism/ Endocrinology

### Non-Human Primate Metabolic Hormone

(Cat. No. NHPMHMAG-45K)

Amylin (active)▶	Insulin
C-Peptide	Leptin
Ghrelin (active)▶	MCP-1/CCL2
GIP (total)	Pancreatic
GLP-1 (active)▶	Polypeptide (PP)
Glucagon▶	PYY (total)
IL-6	

### Non-Human Primate Pituitary Panel 1

(Cat. No. NHPPT1MG-46K)

ACTH	FSH
Agouti-Related Protein (AgRP)	GH
CNTF	LH
	TSH

# MOUSE

## Immunology

### Mouse Cytokine/Chemokine Panel 1

- ☐ (Cat. No. MCYTOMAG-70K)
- 25 (Cat. No. MCYTOMAG-70K-PMX)♦
- 25 (Bulk Cat. No. MCYTOMAG70PMX25BK)♦
- 32 (Cat. No. MCYTOMAG-70K-PX32)
- 32 (Bulk Cat. No. MCYTOMAG70PMX32BK)

Eotaxin/CCL11	IL-13♦
G-CSF♦	IL-15♦
GM-CSF♦	IL-17A/CTLA8♦
IFNγ♦	IP-10/CXCL10♦
IL-1α♦	KC/GRO/CINC-1/ CXCL1♦
IL-1β♦	LIF
IL-2♦	LIX
IL-3	MCP-1/CCL2♦
IL-4♦	M-CSF
IL-5♦	MIG/CXCL9
IL-6♦	MIP-1α/CCL3♦
IL-7♦	MIP-1β/CCL4♦
IL-9♦	MIP-2/CXCL2♦
IL-10♦	RANTES/CCL5♦
IL-12 (p40)♦	TNFα♦
IL-12 (p70)♦	VEGF-A

### Mouse Cytokine/ Chemokine Panel 2

- ☐ (Cat. No. MECY2MAG-73K)
- 15 (Cat. No. MECY2MAG-73KPX)
- 15 (Bulk Cat. No. MECY2MAG73KPBK)

Erythropoietin (EPO)	IL-17A/F
Exodus-2/ CCL21/6Ckine	IL-20
Fractalkine/CX3CL1	MCP-5/CCL12
IFNβ1	MDC/CCL22
IFNγ	MIP-3α/CCL20
IL-11	MIP-3β/CCL19
IL-16	TARC/CCL17

### Mouse High Sensitivity T Cell

- ☐ (Cat. No. MHSTCMAG-70K)
- 18 (Cat. No. MHSTCMAG-70KPMX)
- 18 (Bulk Cat. No. MHSTCMAG-70KPBK)

GM-CSF	IL-10
IFNγ	IL-12 (p70)
IL-1α	IL-13
IL-1β	IL-17A/CTLA8
IL-2	KC/GRO/CINC-1/ CXCL1
IL-4	LIX
IL-5	MCP-1/CCL2
IL-6	MIP-2/CXCL2
IL-7	TNFα

## Mouse Th17

- ☐ (Cat. No. MTH17MAG-47K)
- 25 (Cat. No. MT17MAG47K-PX25)
- 25 (Bulk Cat. No. MT17MAG47PMX25BK)

sCD40L	IL-17E/IL-25
GM-CSF	IL-17F
IFNγ	IL-21
IL-1β	IL-22
IL-2	IL-23
IL-4	IL-27
IL-5	IL-28B/IFNλ3
IL-6	IL-31
IL-10	IL-33/NF-HEV (mature)
IL-12 (p70)	MIP-3α/CCL20
IL-13	TNFα
IL-15	TNFβ/Lymphotoxin-a (LTA)
IL-17A/CTLA8	

### Mouse CD8+ T Cell

- ☐ (Cat. No. MCD8MAG-48K)
- 15 (Cat. No. MCD8MAG48K-PX15)
- 15 (Bulk Cat. No. MCD8MAG48KPX15BK)

sCD137/4-1BB/ TNFRSF9	IL-4
sFas/TNFRSF6	IL-5
sFasL	IL-6
GM-CSF	IL-10
Granzyme B	IL-13
IFNγ	MIP-1β/CCL4
IL-2	RANTES/CCL5
	TNFα

### Mouse Soluble Cytokine Receptor

- ☐ (Cat. No. MSCRMAG-42K)

sCD30	sRAGE
sGP130	sTNF RI
sIL-1RI	sTNF RII
sIL-1RII	sVEGFR1/sFlt-1
sIL-2Ra	sVEGFR2/sKDR/sFlk-1
sIL-4R	sVEGFR3/sFlt-4
sIL-6R	

### Mouse MMP Panel 1 (Serum/Plasma samples)

(Cat. No. MMMP1MAG-79K)

MMP-2	MMP-8
MMP-3	

### Mouse MMP Panel 2 (Serum/Plasma samples)

(Cat. No. MMMP2MAG-79K)

proMMP-9	MMP-12
----------	--------

## Non-Human Primate Cytokine Analysis

Save time and sample with the largest bead-based non-human primate multiplex assay on the market.

Read more at [SigmaAldrich.com/milliplex-primate](http://SigmaAldrich.com/milliplex-primate)



### Mouse MMP Panel 3 (Cell culture samples)

(Cat. No. MMMP3MAG-79K)

MMP-2	proMMP-9
MMP-3	MMP-12
MMP-8	

## Immune Response

### Mouse Immunoglobulin Isotyping

 (Cat. No. MGAMMAG-300K)

IgA	IgG2b
IgG1	IgG3
IgG2a	IgM

## Metabolism/ Endocrinology

### Mouse Adipokine (Serum/Plasma samples)

(Cat. No. MADKMAG-71K)

IL-6	PAI-1 (total)
Insulin	Resistin
Leptin	TNFα
MCP-1/CCL2	

### Mouse Adipocyte (Cell culture samples)

(Cat. No. MADCYMAG-72K)

Adiponectin	PAI-1 (total)
IL-6	Resistin
Leptin	TNFα
MCP-1/CCL2	



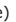


### Mouse Adiponectin – Singleplex (Serum/Plasma samples)

(Cat. No. MADPNMAG-70K-01)

Adiponectin
-------------


### Mouse Metabolic Hormone Expanded

(Cat. No. MMHE-44K)

Amylin (active) 	Leptin
C-Peptide 2	MCP-1/CCL2
Ghrelin (active) 	Pancreatic Polypeptide (PP)
GIP (total)	
GLP-1 (active) 	PYY (total)
GLP-1 (total) 	Resistin
Glucagon 	Secretin
IL-6	TNFα
Insulin	

## Mouse Myokine

(Cat. No. MMYOMAG-74K)

BDNF	Irisin
Erythropoietin (EPO) 	LIF
FGF-21	Myostatin/GDF8
Follistatin-like Protein 1 (FSTL1)	Oncostatin-M (OSM)
IL-6	Osteocrin (OSTN)/Musclin
IL-15	Osteonectin/SPARC

### Mouse Aging Panel 1

(Cat. No. MAGE1MAG-25K)

CTACK/CCL27	Jag1
FGF-21	Leptin
GnRH	Notch1
IL-6	TNFα

### Mouse Pituitary

(Cat. No. MPTMAG-49K)

ACTH	LH
BDNF	Prolactin
FSH	TSH
GH	

## Cardiovascular

### Mouse CVD Panel 1

(Cat. No. MCVD1MAG-77K)

sCD31/sPECAM-1	ProMMP-9
sE-Selectin	sP-Selectin
sICAM-1	Thrombomodulin
PAI-1 (total)	

### Mouse CVD Panel 2

(Cat. No. MCVD2MAG-77K)

sCD40L	Oncostatin M (OSM)
CXCL16	Placental Growth Factor 2
Endocan-1 (ESM-1)	Troponin I (TnI)
Follistatin (FST)	Troponin T (TnT)
LIGHT	

### Mouse Acute Phase Panel 2




(Cat. No. MAP2MAG-76K)

α-1-Acid Glycoprotein (AGP)	CRP
α-2-Macroglobulin	Haptoglobin
Adipsin/Factor D	Serum Amyloid P (SAP)


## Cancer

### Mouse Angiogenesis / Growth Factor Panel 1

(Cat. No. MAGPMAG-24K)

sALK-1	IL-6
Amphiregulin	IL-17A/CTLA8
Angiopoietin-2 	KC/GRO/CINC-1/CXCL1
Betacellulin 	Leptin
sCD31/sPECAM-1 	MCP-1/CCL2
EGF	MIP-1α/CCL3
Endoglin	Placental Growth Factor 2
Endothelin-1	Factor 2
sFasL	Prolactin
FGF-2/FGF-basic	SDF-1/CXCL12
Follistatin (FST)	TNFα
G-CSF	VEGF-A
HGF	VEGF-C
IL-1β	VEGF-D

### Mouse Immuno-Oncology Checkpoint Protein Panel 1

 (Cat. No. MCKP1-110K)

 (Cat. No. MCKP1-110K-PX28)

 (Bulk Cat No. MCKP1-110K-PBK28)

4-1BBL/TNFSF9	Galectin-1
5'-NT/CD73	Galectin-3
B7-H2/ICOSL	GITR
B7-H3/CD276	Granzyme B
BCA-1/CXCL-13	HVEM
BTLA	IFNγ
CD137/4-1BB	IL-10
CD226/DNAM-1	LAG-3
CD25/IL-2Ra	PD-1
CD27	PD-L1
CD40	PD-L2
CD80/B7-1	TIM-3
CTLA-4/CD152	TLR-2
E-Cadherin	TNFα

## Neuroscience

### Mouse Amyloid Beta

(Cat. No. MABMAG-83K)

Amyloid beta 1-40	Amyloid beta 1-42
-------------------	-------------------

### Mouse Neuropeptide


(Cat. No. RMNPMAG-83K)

α-MSH	Oxytocin
β-Endorphin	Substance P
Neurotensin	

### Legend key for MILLIPLEX® kits

- † Analytes which cannot be plexed together:
  - Active and total
  - Free and total
- ◆ Available in Cat. No. listed
- ▼ Premix panel only
- Bulk indicates Space Saver Packaging
- ▲ These analytes cannot be plexed with other analytes in this panel in serum/plasma

- ▶ Requires a protease inhibitor during sample collection
- Requires sample extraction
- \*\* No standard/QC; antibody levels are reported as MFIs (Median Fluorescence Intensities)
- Serum/Plasma only
- ★ Tissue Culture samples only

- ^ Competitive assay format
-  Available for custom premix
- Analyte requires a different sample dilution from others in panel
- ⊙ Analyte cannot be measured in serum
- # Requires sample acidification
- ˆ Analyte cannot be measured in plasma
- u Urine only

## Toxicity

### Mouse Kidney Injury Panel 1

(Cat. No. MKI1MAG-94K)

$\beta$ -2-Microglobulin <sup>U</sup>	Renin
IP-10/CXCL10	TIMP-1
KIM-1	VEGF-A <sup>U</sup>

### Mouse Kidney Injury Panel 2

(Cat. No. MKI2MAG-94K)

Clusterin	NGAL/Lipocalin-2
Cystatin C	Osteopontin (OPN)
EGF	

## RAT

## Immunology

### Rat Cytokine/Chemokine

☑ (Cat. No. RECYTMAG-65K)

27 (Cat. No. RECYMAG65K27PMX)

27 (Bulk Cat. No. RECYMAG65PMX27BK)

EGF	IL-10
Eotaxin/CCL11	IL-12 (p70)
Fractalkine/CX3CL1	IL-13
G-CSF	IL-17A/CTLA8
GM-CSF	IL-18
KC/GRO/CINC-1/ CXCL1	IP-10/CXCL10
IFN $\gamma$	Leptin
IL-1 $\alpha$	LIX
IL-1 $\beta$	MCP-1/CCL2
IL-2	MIP-1 $\alpha$ /CCL3
IL-4	MIP-2/CXCL2
IL-5	RANTES/CCL5
IL-6	TNF $\alpha$
	VEGF

## Metabolism/ Endocrinology

### Rat Adipokine (Serum/Plasma samples)

(Cat. No. RADPKMAG-80K)

IL-1 $\beta$	MCP-1/CCL2
IL-6	PAI-1 (total)
Insulin	TNF $\alpha$
Leptin	

### Rat Adipocyte (Cell culture samples)

(Cat. No. RADPCMAG-82K)

Adiponectin	MCP-1/CCL2
IL-1 $\beta$	PAI-1 (total)
IL-6	TNF $\alpha$
Leptin	

### Rat Metabolic Hormone Expanded

(Cat. No. RMHE-120K)

Amylin (active) $\blacktriangleright$	Insulin
C-Peptide 2	Leptin
Ghrelin (active) $\blacktriangleright$	MCP-1/CCL2
GIP (total)	Pancreatic Polypeptide (PP)
GLP-1 (active) $\dagger$ $\blacktriangleright$	PYY (total)
GLP-1 (total) $\dagger$ $\blacktriangleright$	Secretin
Glucagon $\blacktriangleright$	TNF $\alpha$
IL-6	

### Rat Myokine

(Cat. No. RMYOMAG-88K)

BDNF	IL-15
Erythropoietin (EPO)	Irisin
FGF-21	LIF
Follistatin-like Protein 1 (FSTL1)	Myostatin/GDF8
Fractalkine/CX3CL1	Osteonin (OSTN)/ Musclin
IL-6	Osteonectin/SPARC

### Rat Pituitary

(Cat. No. RPTMAG-86K)

ACTH	LH
BDNF	Prolactin
FSH	TSH
GH	

### Rat Stress Hormone $\blacksquare$

(Cat. No. RSHMAG-69K)

ACTH	Melatonin $\wedge$
Corticosterone $\wedge$	

### Rat Thyroid

(Cat. No. RTHYMAG-30K)

T3 $\wedge$	TSH
T4 $\wedge$	

## Cardiovascular

### Rat Cardiac Injury Panel 1

(Cat. No. RCI1MAG-87K)

Cardiac Troponin I (cTnI)	FABP3
Cardiac Troponin T (cTnT)	Follistatin-like Protein 1 (FSTL1)
Creatine Kinase Muscle (CKM)	Myosin Light Chain 3 (MYL3)
	TIMP-1

### Rat Vascular Injury Panel 1 (Serum/Plasma samples)

(Cat. No. RV1MAG-26K)

Caveolin-1	IL-6
Connective Tissue Growth Factor (CTGF)	MCP-1/ CCL2
KC/GRO/CINC-1/ CXCL1	PAI-1 (total)
	TIMP-1
	TNF $\alpha$
	VEGF

### Rat Vascular Injury Panel 2 (Serum/Plasma samples)

(Cat. No. RV2MAG-26K)

Adiponectin	sICAM-1
sE-Selectin	

### Rat Vascular Injury Panel 3 (Serum/Plasma samples)

(Cat. No. RV3MAG-26K)

$\alpha$ -1-Acid Glycoprotein (AGP)	Haptoglobin
$\alpha$ -2-Macroglobulin (A2M)	

## Bone

### Rat Bone Panel 1 (Serum/Plasma samples)

(Cat. No. RBN1MAG-31K)

ACTH	Leptin
DKK1	Osteoprotegerin (OPG)
FGF-23	PTH
Insulin	Sclerostin (SOST)

## Neuroscience

### Rat Neuropeptide $\blacksquare$ $\wedge$

(Cat. No. RMNPMAG-83K)

$\alpha$ -MSH	Oxytocin
$\beta$ -Endorphin	Substance P
Neurotensin	

Quality in Every MILLIPLEX® Kit

We pride ourselves in our quality R&D, support, manufacturing, and QC.

Read more at: [SigmaAldrich.com/milliplex-quality](https://SigmaAldrich.com/milliplex-quality)



## Toxicity

### Rat Kidney Toxicity Panel 1 (Urine samples)

(Cat. No. RKT1MAG-37K)

Clusterin	Osteopontin (OPN)
GSTa^	TIMP-1
IP-10/CXCL10	VEGF-A
KIM-1	

### Rat Kidney Toxicity Panel 2 (Urine samples)

(Cat. No. RKT2MAG-37K)

α-1-Acid Glycoprotein (AGP)	Cystatin C
Albumin^	EGF
β-2-Microglobulin	NGAL/Lipocalin-2

### Rat Liver Injury

(Cat. No. RLI1MAG-92K)

5'NT/CD73	GSTa
ARG1	SDH
GOT1	

## COMPANION/ AGRICULTURAL

## Immunology

### Bovine Cytokine/Chemokine Panel 1

- ☉ (Cat. No. BCYT1-33K)
- 15 (Cat. No. BCYT1-33K-PX15)
- 15 (Bulk Cat. No. BCYT1-33K-PXBK15)

IFNγ	IL-36RA/IL-1F5
IL-1α	IP-10/CXCL10
IL-1β	MCP-1/CCL2
IL-4	MIP-1α/CCL3
IL-6	MIP-1β/CCL4
IL-8/CXCL8	TNFα
IL-10	VEGF-A
IL-17A/CTLA8	

### Bovine Acute Phase Protein

**NEW**

(Cat. No. BAPP1-150K)

Haptoglobin	Fibrinogen
-------------	------------

### Canine Cytokine/Chemokine

- ☉ (Cat. No. CCYTOMAG-90K)
- 15 (Cat. No. CCYTOMAG-90K-PX13)
- 15 (Bulk Cat. No. CCYTOMAG90KPX13BK)

GM-CSF	IL-15
IFNγ	IL-18
IL-2	IP-10/CXCL10
IL-6	KC-like
IL-7	MCP-1/CCL2
IL-8/CXCL8	TNFα
IL-10	

### Chicken Cytokine/Chemokine

- ☉ (Cat. No. GCYT1-16K)
- 12 (Cat. No. GCYT1-16K-PX12)
- 12 (Bulk Cat. No. GCYT1-16K-PXBK12)

IFNα	IL-21
IFNγ	M-CSF
IL-2	MIP-1β/CCL4
IL-6	MIP-3α/CCL20
IL-10	RANTES/CCL5
IL-16	VEGF

### Equine Cytokine/Chemokine

- ☉ (Cat. No. EQCYTMAG-93K)
- 23 (Cat. No. EQCYTMAG-93KPX23)
- 23 (Bulk Cat. No. EQCYTMAG93KPX23BK)

Eotaxin/CCL11	IL-6
FGF-2/FGF-basic	IL-8/CXCL8
Fractalkine/CX3CL1	IL-10
G-CSF	IL-12 (p70)
GM-CSF	IL-13
GRO	IL-17A/CTLA8
IFNγ	IL-18
IL-1α	IP-10/CXCL10
IL-1β	MCP-1/CCL2
IL-2	RANTES/CCL5
IL-4	TNFα
IL-5	

### Feline Cytokine/Chemokine ▼

- 19 (Cat. No. FCYTMAG-20K-PMX)
  - 19 (Bulk Cat. No. FCYTMAG20KPX19BK)
- NON-CONFIGURABLE KIT**

sFAS/TNFRSF6	IL-13
Flt3 Ligand	IL-18
GM-CSF	KC/GRO/CINC-1/ CXCL1
IFNγ	MCP-1/CCL2
IL-1β	PDGF-BB
IL-2	RANTES/CCL5
IL-4	SCF
IL-6	SDF-1/CXCL12
IL-8/CXCL8	TNFα
IL-12 (p40)	

### Ovine Cytokine/Chemokine Panel 1

- ☉ (Cat. No. SCYT1-91K)
- 14 (Cat. No. SCYT1-91K-PX14)
- 14 (Bulk Cat. No. SCYT1-91K-PXBK14)

IFNγ	IL-17A/CTLA8
IL-1α	IL-36RA/IL-1F5
IL-1β	IP-10/CXCL10
IL-4	MIP-1α/CCL3
IL-6	MIP-1β/CCL4
IL-8/CXCL8	TNFα
IL-10	VEGF-A

### Porcine Cytokine/Chemokine

- ☉ (Cat. No. PCYTMAG-23K)
- 15 (Cat. No. PCYTMAG-23K-13PX)
- 15 (Bulk Cat. No. PCYTMAG23KPMX13BK)

GM-CSF	IL-6
IFNγ	IL-8/CXCL8
IL-1α	IL-10
IL-1β	IL-12
IL-1Ra	IL-18
IL-2	TNFα
IL-4	

### Porcine Acute Phase Protein

**NEW**

(Cat. No. PAPP1-160K)

CRP	Haptoglobin
-----	-------------

## MILLIPLEX® Veterinary Medicine and Animal Health Kits

Expand your possibilities in animal health research with our wide selection of biomarker kits.

Discover more at [SigmaAldrich.com/vetmed](http://SigmaAldrich.com/vetmed)



### Legend key for MILLIPLEX® kits

- † Analytes which cannot be plexed together:
  - Active and total
  - Free and total
- ◆ Available in Cat. No. listed
- ▼ Premix panel only
- Bulk indicates Space Saver Packaging
- ▲ These analytes cannot be plexed with other analytes in this panel in serum/plasma

- ▶ Requires a protease inhibitor during sample collection
- Requires sample extraction
- \*\* No standard/QC; antibody levels are reported as MFIs (Median Fluorescence Intensities)
- Serum/Plasma only
- ★ Tissue Culture samples only

- ^ Competitive assay format
- ☉ Available for custom premix
- ° Analyte requires a different sample dilution from others in panel
- Analyte cannot be measured in serum
- # Requires sample acidification
- § Analyte cannot be measured in plasma
- u Urine only

## Metabolism/ Endocrinology

### Canine Gut Hormone

(Cat. No. CGTMAG-98K)

Amylin (total) ▶	Insulin
Ghrelin (active) ▶	Leptin
GIP (total)	Pancreatic
GLP-1 (active) ▶	Polypeptide (PP)
Glucagon	PYY (total)

### Canine Pituitary Expanded Panel

(Cat. No. CANPIT-96K)

ACTH	LH
FSH	Prolactin
GH	TSH

## Toxicity

### Canine Kidney Toxicity Expanded Panel 1 (Urine samples)

(Cat. No. CKT1MAG-97K)

Clusterin	MCP-1/CCL2
Cystatin C	NGAL/Lipocalin-2
IL-8/CXCL8	Osteopontin (OPN)
KIM-1	

### Canine Kidney Toxicity Panel 2 (Urine samples)

(Cat. No. CKT2MAG-97K)

Albumin	RBP4
β-2-Microglobulin	TFF-3

## MULTI-SPECIES

### Immunology

#### Multi-Species TGFβ – Singleplex #

(Cat. No. TGFBMAG-64K-01)  
(Bulk Cat. No. TGFBMAG-64K-01BK)

Species: C, E, F, H, M, NHP, Por, R, guinea pig, hamster, rabbit

TGFβ1

#### Multi-Species TGFβ – 3 Plex ▼#

(Cat. No. TGFBMAG-64K-03)  
Species: H, M, NHP, R, guinea pig, hamster, mini pig; additionally, TGF-β1 and TGF-β2 can be detected in the serum of C, E, and rabbit

**NON-CONFIGURABLE KIT**

TGFβ1                      TGFβ3  
TGFβ2

## Metabolism/ Endocrinology

#### Multi-Species Hormone ■ ^

(Cat. No. MSHMAG-21K)  
Species: C, E, F, H, M, NHP, Por, R, guinea pig, hamster, rabbit

Cortisol                      T3  
Estradiol                      T4  
Progesterone

## KITS TO BE PHASED OUT

### Non-Human Primate Cytokine/Chemokine Panel 1

☉ (Cat. No. PRCYTOMAG-40K)  
23 (Cat. No. PCYTMG-40K-PX23)  
25 (Bulk Cat. No. PRCYMAG40PMX23BK)

sCD40L	IL-12/23 (p40)
G-CSF	IL-13
GM-CSF	IL-15
IFNγ	IL-17A/CTLA8
IL-1β	IL-18
IL-1Ra	MCP-1/CCL2
IL-2	MIP-1a/CCL3
IL-4	MIP-1β/CCL4
IL-5	TGFα
IL-6	TNFα
IL-8/CXCL8	VEGF-A
IL-10	

### Non-Human Primate Cytokine/Chemokine Panel 2

☉ (Cat. No. PRCYT2MAG40K)  
24 (Cat. No. PRCYT2MAG40K-PX24)  
24 (Bulk Cat. No. PRCY2MG40PMX24BK)  
25 (Cat. No. PRCYT2MAG40K-PX25)  
25 (Bulk Cat. No. PRCY2MG40PMX25BK)

sCD137/4-1BB/ TNFRSF9	IL-17E/IL-25
Eotaxin/CCL11	IL-21
sFasL	IL-22
FGF-2/FGF-basic	IL-23
Fractalkine/CX3CL1	IL-28A/IFNλ2
Granzyme A	IL-31
Granzyme B	IL-33/NF-HEV (mature)
IL-1α	IP-10/CXCL10
IL-2	MIP-3a/CCL20
IL-4	Perforin
IL-6	RANTES/CCL5 ▲
IL-16	TNFβ/Lymphotoxin-α (LTA)
IL-17A/CTLA8	

MULTIPLE

MILLIPIX® IMMUNOLOGY / METABOLISM / ENDOCRINOLOGY / TOXICITY

FOR RESEARCH USE ONLY. NOT FOR USE IN DIAGNOSTIC PROCEDURES.

# Cell Signaling MILLIPLEX® Assays

## Akt/mTOR (Phosphoprotein) – 11 Plex

(Cat. No. 48-611MAG) AB2 ▼ **NON-CONFIGURABLE KIT**

Analyte	Total	Phosphorylated	
Akt/PKB	✓ (Ser473)	H, M, R	
GSK3α	✓ (Ser21)	H, M, R	
GSK3β	✓ (Ser9)	H, M, R	
IGF1R	✓ (Tyr1135/1136)	H, M	
IR	✓ (Tyr1162/1163)	H	
IRS1	✓ (Ser636)	H, M, R	
mTOR	✓ (Ser2448)	H, M, R	
p70S6 Kinase	✓ (Thr412)	H, M, R	
PTEN	✓ (Ser380)	H, M, R	
RPS6	✓ (Ser235/236)	H, M, R	
TSC2	✓ (Ser939)	H, M, R	

## Akt/mTOR (Total) – 11 Plex

(Cat. No. 48-612MAG) AB2 ▼ **NON-CONFIGURABLE KIT**

Analyte	Total	Phosphorylated	
Akt/PKB	✓	H, M, R	
GSK3α	✓	H, M, R	
GSK3β	✓	H, M, R	
IGF1R	✓	H, M, R	
IR	✓	H, R	
IRS1	✓	H, M, R	
mTOR	✓	H, M, R	
p70S6 Kinase	✓	H, M, R	
PTEN	✓	H, M, R	
RPS6	✓	H, M, R	
TSC2	✓	H, M, R	

## Early Apoptosis – 7 Plex

(Cat. No. 48-669MAG) AB2 ▼ **NON-CONFIGURABLE KIT**

Analyte	Total	Phosphorylated	
Akt/PKB	✓ (Ser473)	H, M, R	
BAD	✓ (Ser112)	H, M	
Bcl-2	✓ (Ser70)	H	
Active Caspase-8 (Asp384)	✓	H	
Active Caspase-9 (Asp315)	✓	H	
JNK/SAPK1	✓ (Thr183/Tyr185)	H, M, R	
p53	✓ (Ser46)	H	

## Human Bcl-2 Family Apoptosis Panel 1 - 6 Plex

(Cat. No. 48-682MAG) AB1 ▼ **NON-CONFIGURABLE KIT**

Analyte	Total	Phosphorylated	
BAD	✓	✓ (Ser112)	H
BAX	✓		H
Bcl-xL/BAD (interaction)	✓		H
BIM	✓		H
Mcl-1/BIM (interaction)	✓		H

## Human Bcl-2 Family Apoptosis Panel 2 - 4 Plex

(Cat. No. 48-683MAG) AB1 ▼ **NON-CONFIGURABLE KIT**

Analyte	Total	Phosphorylated	
Bcl-2	✓		H
Bcl-xL	✓		H
Mcl-1	✓		H
NOXA/Mcl-1 (interaction)	✓		H

## Human DNA Damage/Genotoxicity – 7 Plex

(Cat. No. 48-621MAG) AB1 ▼ **NON-CONFIGURABLE KIT**

Analyte	Total	Phosphorylated	
ATR	✓		H
Chk1		✓ (Ser345)	H, M, R
Chk2		✓ (Thr68)	H
H2A.X		✓ (Ser139)	H, M, R
MDM2	✓		H, M, R
p21	✓		H
p53		✓ (Ser15)	H

## MAPK/SAPK (Phosphoprotein) – 10 Plex

(Cat. No. 48-660MAG) AB2 ▼ **NON-CONFIGURABLE KIT**

Analyte	Total	Phosphorylated	
ATF2		✓ (Thr71)	H, M
c-Jun		✓ (Ser73)	H, M, R
Erk/MAPK 1/2		✓ (Thr185/Tyr187)	H, M, R
HSP27		✓ (Ser78)	H
JNK/SAPK1		✓ (Thr183/Tyr185)	H, M, R
MEK1		✓ (Ser222)	H, M, R
MSK1		✓ (Ser212)	H, M
p38/SAPK2A/B		✓ (Thr180/Tyr182)	H, M, R
p53		✓ (Ser15)	H
STAT1		✓ (Tyr701)	H, M

## Learn more about Cancer and Metastasis Signaling Pathways

Read about all of the kits that can elucidate your signaling research at [SigmaAldrich.com/milliplex-cancer-cs](http://SigmaAldrich.com/milliplex-cancer-cs)

- Can be plexed with other 2 Plexes
  - \* Cannot plex with other phospho Akt
  - ▼ Premix panel only
- AB1:** Uses Assay Buffer 1      **H** Human  
**AB2:** Uses Assay Buffer 2      **M** Mouse  
**R** Rat

**Human RTK (Phosphoprotein)**

(Choose analytes that meet your needs)

(Cat. No. HPRTKMAG-01K) AB1

Analyte	Total	Phosphorylated
c-Kit		(pan Tyr) H
c-Met/HGFR		(pan Tyr) H
ErbB1/EGFR		(pan Tyr) H
ErbB2/HER2		(pan Tyr) H
ErbB3/HER3		(pan Tyr) H
ErbB4/HER4		(pan Tyr) H
FGFR1		(pan Tyr) H
Flt3		(pan Tyr) H
M-CSFR		(pan Tyr) H
PDGFR $\alpha$		(pan Tyr) H, M, R
PDGFR $\beta$		(pan Tyr) H
TIE1		(pan Tyr) H
TIE2		(pan Tyr) H
VEGFR1/Flt-1		(pan Tyr) H
VEGFR2/KDR/Flk-1		(pan Tyr) H
VEGFR3/Flt-4		(pan Tyr) H, M, R

**Multi-Pathway (Phosphoprotein) – 9 Plex**(Cat. No. 48-680MAG) AB2 ▼ **NON-CONFIGURABLE KIT**

Analyte	Total	Phosphorylated
Akt/PKB	✓ (Ser473)	H, M, R
CREB	✓ (Ser133)	H, M, R
Erk/MAPK 1/2	✓ (Thr185/Tyr187)	H, M, R
JNK/SAPK1	✓ (Thr183/Tyr185)	H, M, R
NF $\kappa$ B	✓ (Ser536)	H, M, R
p38/SAPK2A/B	✓ (Thr180/Tyr182)	H, M, R
p70S6 Kinase	✓ (Thr412)	H, M, R
STAT3	✓ (Ser727)	H, M, R
STAT5A/B	✓ (Tyr694/699)	H, M, R

**Multi-Pathway (Total) – 9 Plex**(Cat. No. 48-681MAG) AB2 ▼ **NON-CONFIGURABLE KIT**

Analyte	Total	Phosphorylated
Akt/PKB	✓	H, M, R
CREB	✓	H, M, R
Erk/MAPK 1/2	✓	H, M, R
JNK/SAPK1	✓	H, M, R
NF $\kappa$ B	✓	H, M, R
p38/SAPK2A/B	✓	H, M, R
p70S6 Kinase	✓	H, M, R
STAT3	✓	H, M, R
STAT5A/B	✓	H, M, R

**NF $\kappa$ B – 6 Plex**(Cat. No. 48-630MAG) AB1 ▼ **NON-CONFIGURABLE KIT**

Analyte	Total	Phosphorylated
c-Myc	✓	H
FADD		✓ (Ser194) H
I $\kappa$ B $\alpha$		✓ (Ser32) H
IKK $\alpha$ / $\beta$		✓ (Ser177/181) H
NF $\kappa$ B		✓ (Ser536) H, M
TNFR1	✓	H

**Protein Translation – 6 Plex**(Cat. No. 48-655MAG) AB2 ▼ **NON-CONFIGURABLE KIT**

Analyte	Total	Phosphorylated
eIF2a		✓ (Ser51) H, M, R
eIF-4B		✓ (Ser422) H, M, R
eIF-4E		✓ (Ser209) H, M, R
eIF-4G		✓ (Ser1108) H, M, R
4E-BP1	✓	✓ (Thr37/46) H, M, R

**Human Ras-Raf Oncoprotein – 6 Plex**(Cat. No. 48-684MAG) AB2 ▼ **NON-CONFIGURABLE KIT**

Analyte	Total	Phosphorylated
BRAF		✓ (Ser446) H, M, R
CRAF		✓ (Ser338) H, M, R
MEK1		✓ (Ser217/221) H, M, R
Ras	✓	H, M, R
RasG12D	✓	H
RasG12V	✓	H

**Src Family Kinase Active Site (Phosphoprotein) – 8 Plex**(Cat. No. 48-650MAG) AB2 ▼ **NON-CONFIGURABLE KIT**

Analyte	Total	Phosphorylated
Blk		✓ (Tyr389) H
Fgr		✓ (Tyr412) H, R
Fyn		✓ (Tyr420) H, M, R
Hck		✓ (Tyr411) H, M
Lck		✓ (Tyr394) H, M, R
Lyn		✓ (Tyr397) H, R
Src		✓ (Tyr419) H, M, R
Yes		✓ (Tyr421) H, M, R

**STAT (Phosphoprotein) – 5 Plex**(Cat. No. 48-610MAG) AB2 ▼ **NON-CONFIGURABLE KIT**

Analyte	Total	Phosphorylated
STAT1		✓ (Tyr701) H, M
STAT2		✓ (Tyr690) H
STAT3		✓ (Tyr705) H, M, R
STAT5A/B		✓ (Tyr694/699) H, M, R
STAT6		✓ (Tyr641) H

**T-Cell Receptor (Phosphoprotein) – 7 Plex**(Cat. No. 48-690MAG) AB2 ▼ ●●● **NON-CONFIGURABLE KIT**

Analyte	Total	Phosphorylated	
CD3ε		✓ (pan Tyr)	H
CREB		✓ (Ser133)	H, M, R
Erk/MAPK 1/2		✓ (Thr185/Tyr187)	H, M, R
LAT		✓ (pan Tyr)	H
Lck		✓ (pan Tyr)	H, M, R
Syk		✓ (pan Tyr)	H
ZAP-70		✓ (pan Tyr)	H

**TGFβ – 6 Plex**(Cat. No. 48-614MAG) AB2 ▼ ●●● **NON-CONFIGURABLE KIT**

Analyte	Total	Phosphorylated	
Akt/PKB		✓ (Ser473)	H, M, R
Erk/MAPK 1/2		✓ (Thr185/Tyr187)	H, M, R
SMAD2		✓ (Ser465/467)	H, M, R
SMAD3		✓ (Ser423/425)	H, M, R
SMAD4	✓		H, M, R
TGFβRII	✓		H

**Akt Phospho/Total – 2 Plex**(Cat. No. 48-618MAG) AB2 ▼ \* ●●● **NON-CONFIGURABLE KIT**

Analyte	Total	Phosphorylated	
Akt/PKB		✓ (Ser473)	H, M, R
Akt/PKB	✓		H, M, R

**Akt1 Phospho/Total – 2 Plex**(Cat. No. 48-631MAG) AB2 ▼ \* ●●● **NON-CONFIGURABLE KIT**

Analyte	Total	Phosphorylated	
Akt1		✓ (Ser473)	H, M, R
Akt1	✓		H, M, R

**Akt2 Phospho/Total – 2 Plex**(Cat. No. 48-632MAG) AB2 ▼ \* ●●● **NON-CONFIGURABLE KIT**

Analyte	Total	Phosphorylated	
Akt2		✓ (Ser474)	H, M, R
Akt2	✓		H, M, R

**CREB Phospho/Total – 2 Plex**(Cat. No. 48-628MAG) AB2 ▼ ●●● **NON-CONFIGURABLE KIT**

Analyte	Total	Phosphorylated	
CREB		✓ (Ser133)	H, M, R
CREB	✓		H, M, R

**Erk/MAPK 1/2 Phospho/Total – 2 Plex**(Cat. No. 48-619MAG) AB2 ▼ ●●● **NON-CONFIGURABLE KIT**

Analyte	Total	Phosphorylated	
Erk/MAPK 1/2		✓ (Thr185/Tyr187)	H, M, R
Erk/MAPK 1/2	✓		H, M, R

**JNK Phospho/Total – 2 Plex**(Cat. No. 48-622MAG) AB2 ▼ ●●● **NON-CONFIGURABLE KIT**

Analyte	Total	Phosphorylated	
JNK/SAPK1		✓ (Thr183/Tyr185)	H, M, R
JNK/SAPK1	✓		H, M, R

**mTOR Phospho/Total – 2 Plex**(Cat. No. 48-625MAG) AB2 ▼ ●●● **NON-CONFIGURABLE KIT**

Analyte	Total	Phosphorylated	
mTOR		✓ (Ser2448)	H, M, R
mTOR	✓		H, M

**p38 Phospho/Total – 2 Plex**(Cat. No. 48-624MAG) AB1 or AB2 ▼ ●●● **NON-CONFIGURABLE KIT**

Analyte	Total	Phosphorylated	
p38/SAPK2A/B		✓ (Thr180/Tyr182)	H, M, R
p38/SAPK2A/B	✓		H, M, R

**STAT3 Phospho/Total – 2 Plex**(Cat. No. 48-623MAG) AB2 ▼ ●●● **NON-CONFIGURABLE KIT**

Analyte	Total	Phosphorylated	
STAT3		✓ (Tyr705)	H, M, R
STAT3	✓		H, M, R

**MAPmate™ Singleplex Loading Control Assays**

Plex loading control MAPmate™ assays into existing MILLIPLEX® Cell Signaling Panels. Our Cell Signaling Buffer and Detection Kit (Cat. No. 48-602MAG), may be purchased if additional buffers are required.

MAPmate™ Kits	Species Homology (Buffer)	Cat. No.
β-Tubulin (total)	H, M, R (AB1 & AB2)	46-713MAG
GAPDH (total)	H (AB2)	46-667MAG

- Can be plexed with other 2 Plexes
- \* Cannot plex with other phospho Akt
- ▼ Premix panel only

AB1: Uses Assay Buffer 1  
AB2: Uses Assay Buffer 2

H Human  
M Mouse  
R Rat



# Luminex® Multiplexing Platforms

## Driving Assay Consistency

Combined with the largest portfolio of multiplex analytes available, we provide you the power of Luminex® xMAP® technology, the most trusted, widely used platform for biomarker screening and protein analysis. As a Luminex® partner, we are a preferred distributor of Luminex® instruments, accessories, and software.

## Luminex® xMAP® technology offers many advantages compared to other immunoassay methods:

- **Multiplexing:** Data generated simultaneously is less prone to user error, enabling the end-user to construct cleaner data sets to explore multiple parameters.
- **Low sample volume:** With minimal hands-on time, screen multiple analytes in a single sample using a maximum of 25 µL per well.
- **Magnetic bead-based format:** Responds rapidly and efficiently to a magnetic field, enabling better and faster washing techniques, including high-throughput washing options.
- **Reproducibility:** High-volume production of xMAP® microspheres allows assay standardization that solid-phased flat arrays cannot provide.
- **Speed/high-throughput:** Simultaneously measure the concentration of a large number of different analytes in a single sample, in 96- or 384-well format, to do your work faster, gaining early and comprehensive data.



## Specifications

Instruments	xMAP® INTELLIFLEX® DR-SE*	xMAP® INTELLIFLEX®	FLEXMAP 3D®	Luminex® 200™
<b>Cat. No.</b>	<b>INTELLIFLEX-DRSE</b>	<b>INTELLIFLEX-RU0</b>	<b>40-014</b>	<b>40-012</b>
<b>Optics Hardware</b>	Lasers/APDs/PMTs	Lasers/APDs/PMTs	Lasers/APDs/PMTs	Lasers/APDs/PMTs
<b>Technology</b>	Flow-based	Flow-based	Flow-based	Flow-based
<b>Multiplexing</b>	Up to 500	Up to 500	Up to 500	Up to 100 (80 on MagPlex® microspheres)
<b>Dynamic Range**</b>	≥5.5 logs (RP1) ≥4.5 logs (RP2)	≥5.5 logs (RP1)	≥4.5 logs (RP1)	≥3.5 logs (RP1)
<b>Read Time</b>	96-well in ~20 min 384-well in ~75 min	96-well in ~20 min 384-well in ~75 min	96-well in ~20 min 384-well in ~75 min	96-well in ~45 min
<b>Applications</b>	Protein/nucleic acid	Protein/nucleic acid	Protein/nucleic acid	Protein/nucleic acid
<b>Automation-Compatible Hardware</b>	Front and side eject	Front eject only	Front eject only	Front eject only
<b>Reporter Laser</b>	532 nm (green) 405 nm (violet)	532 nm (green)	532 nm (green)	532 nm (green)
<b>IQ/OQ</b>	Yes	Yes	Yes	Yes
<b>21 CFR Compliance</b>	Yes	Yes	Yes	Yes
<b>Automation</b>	Yes	Yes	Yes	Yes
<b>Data Analysis</b>	Belysa® software	Belysa® software	xPONENT® basic + Belysa® software	xPONENT® basic + Belysa® software
<b>Plate Format</b>	96-well and 384-well	96-well and 384-well	96-well and 384-well	96-well
<b>Footprint (Linear Bench Space, including PC)</b>	58.4 cm x 61 cm x 76.2 cm	58.4 cm x 61 cm x 76.2 cm	110 cm x 62 cm x 63 cm	115 cm x 60 cm x 50 cm
<b>Weight</b>	54.4 kg (120 lbs)	54.4 kg (120 lbs)	77.1 kg (170 lbs)	49 kg (113 lbs)

\*DR-SE = dual reporter side eject; \*\*RP = reporter

Luminex® 200™ and FLEXMAP 3D® systems run on the Luminex® xPONENT® 4.3 data acquisition platform; the xMAP® INTELLIFLEX® systems run on INTELLIFLEX 1.0. All systems provide a consistent experience, from data input to results, no matter which instrument is used. All software adapts to fit the capabilities of each platform.

## Choose the Best Multiplexing Platform for Your Research

Compare the four available Luminex® xMAP® technology instruments in detail at:  
[SigmaAldrich.com/luminex](http://SigmaAldrich.com/luminex)



# Critical Reagents Characterized for Consistency

## Conferma® ELISAs

Conferma® ELISAs are developed with a focus on critical reagents to deliver assays with excellent detectability, sensitivity, and lot-to-lot consistency.

### Three Key Factors

**1. The standard protein:** Produced in HEK293 cells to improve folding, the recombinant protein is evaluated using mass spectrometry (LC-MS, RP-LC-UV-MS) to compare the sequence coverage and mass with the recognized mature sequence of the target.

IL-6 Calibrator Lot 028M4878V matches with the reported IL-6 sequence from UniProt accession # P05231, AA30-212.

**2. The monoclonal antibodies:** Multiple clones are produced and evaluated with close consideration of the antibody affinity towards the standard as determined by Surface Plasmon Resonance (SPR).

Multiple lots of IL-8 capture and detection antibodies were evaluated against the standard (antigen) using SPR (Biacore™ system). All monoclonal antibodies selected for Conferma® kits have a  $K_D$  < 0.5 nM which is considered high affinity.

**3. Lot-to-lot consistency:** In addition to focusing on reagents, each assay batch is further verified at the finished kit level, comparing the standard curves for similarity and against a sample library (endogenous and spiked) to confirm they meet release criteria.

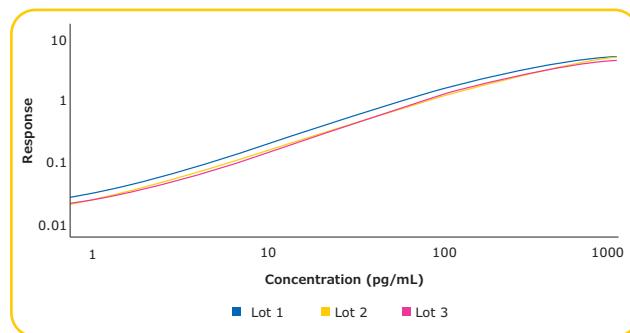
Three lots of TNF- $\alpha$  Conferma® ELISA kits were evaluated for consistency using mathematical parallelism with Belysa® software curve comparison results using Lot 1 as a reference against Lots 2 and 3. Mathematical variation between curves is considered perfect when parallelism is equal to 1.

### Measured Mass by RP-LC-UV-MS: 20,977 Da

#### Sequence Coverage for Calibrator Lot 028M4878V

VPPGEDSKDVAAPHRQPLTSSERIDKQIRYILDGISALRKETCNKSNMCESS  
KEALAENNLNLPKMAEKDGCFCQSGFNEETCLVKIITGLLEFEVYLEYLQNRFE  
SSEEQARAVQMSTKVLIQFLQKKAKNLDATITPDPPTTNASLLTKLQAQNLWL  
QDMTTHLILRSFKEFLQSSLRALRQM

Sample	Antigen	$K_D$ (nM)
IL-8 Capture Lot RB1907009	057M4835V	0.00062
IL-8 Capture Lot RB1901011	057M4835V	0.00041
IL-8 Capture Lot RB2003010	057M4835V	0.00086
IL-8 Detection Lot RB1907008	057M4835V	0.12
IL-8 Detection Lot RB1903010	057M4835V	0.15
IL-8 Detection Lot RB2003009	057M4835V	0.10
IL-8 Biotin Detection Lot RB1907008	057M4835V	0.08
IL-8 Biotin Detection Lot RB1903010	057M4835V	0.12
IL-8 Biotin Detection Lot RB2003009	057M4835V	0.16



Curve	Parallelism
Lot 2 vs. Lot 1	0.983
Lot 3 vs. Lot 1	0.992

### Conferma® ELISAs

Analyte	Std. Range (pg/mL)	LLOQ (Curve) (pg/mL)	Cat. No.
IL-6 (Human)	1.17 – 150	1.17	EZIL6-98K
IL-8 (Human)	0.82 – 200	0.82	EZHIL8-100K
MCP-1 (Human)	7.81 – 1,000	7.81	EZMCP1-99KRM
TNF- $\alpha$ (Human)	1.65 – 400	1.65	EZHTNFA-150K

# Millipore® Brand ELISAs

Metabolic/Endocrine/ Cytokine ELISAs	Species	Standard Curve Range	Sensitivity	Sample Volume	Cat. No.	Bulk Packaging Cat. No.*
Adiponectin	Human	1.56–200 ng/mL	0.2 ng/mL	10 µL	EZHADP-61K	EZHADP-61BK
Adiponectin (High Molecular Weight)	Human	1.5–200 ng/mL	0.5 ng/mL	10 µL	EZHMWAN-65K	
Adiponectin	Mouse	1–50 ng/mL	0.2 ng/mL	10 µL	EZMADP-60K	EZMADP-60BK
Amylin (active)	Human	1–100 pM	0.7 pM	50 µL	EZHA-52K	
C-Peptide	Human	0.2–20 ng/mL	0.05 ng/mL	10 µL	EZHCP-20K	EZHCP-20BK
C-Peptide	Canine	0.2–10 ng/mL	0.24 ng/mL	25 µL	EZCCP-47K	
C-Peptide 2	Mouse, Rat	25–1,600 pM	15.0 pM	20 µL	EZRMCP2-21K	
C-Reactive Protein (CRP)	Human	0.12–10 ng/mL	0.2 ng/mL	2 µL	CYT298	
C-Reactive Protein (CRP)	Rat	4.9–10 ng/mL	2.5 ng/mL	2 µL	CYT294	
FGF-21	Human	31.25–2,000 pg/mL	10.0 pg/mL	50 µL	EZHFGF21-19K	
FGF-21	Mouse, Rat	49.4–12,000 pg/mL	10.0 pg/mL	10 µL	EZRMFGF21-26K	
FGF-23	Human	9.9–2,400 pg/mL	3.5 pg/mL	50 µL	EZHFGF23-32K	EZHFGF23-32BK
Ghrelin (active)	Human	25–2,000 pg/mL	15.0 pg/mL	20 µL	EZGRA-88K	EZGRA-88BK
Ghrelin (active)	Mouse, Rat	25–2,000 pg/mL	8.0 pg/mL	20 µL	EZRGRA-90K	
Ghrelin (total)	Human	100–5,000 pg/mL	50.0 pg/mL	20 µL	EZGRT-89K	EZGRT-89BK
Ghrelin (total)	Mouse, Rat	0.1–10 ng/mL	0.04 ng/mL	20 µL	EZRGR-91K	
GIP (total)	Human	8.2–2,000 pg/mL	4.2 pg/mL	20 µL	EZHGI-54K	EZHGI-54BK
GIP (total)	Mouse, Rat	8.2–2,000 pg/mL	4.2 pg/mL	10 µL	EZRMGI-55K	EZRMGI-55BK
GLP-1 (active)	Multi-Species	2–100 pM	1.0 pM	100 µL	EGLP-35K	EGLP-35BK
GLP-1 High Sensitivity (active) Δ••	Multi-Species	See data sheet	0.14 pM	50 µL	EZGLPHS-35K	EZGLPHS-35BK
GLP-1 (total)	Multi-Species	4.1–1,000 pM	1.0 pM	20–50 µL	EZGLP1T-36K	EZGLP1T-36BK
GLP-2	Multi-Species	1–64 ng/mL	0.3 ng/mL	50 µL	EZGLP2-37K	
Glucagon Δ	Human, Mouse, Rat	0.02–2 ng/mL	0.003 ng/mL	150–300 µL	EZGLU-30K	EZGLU-30BK
Growth Hormone (GH)	Mouse, Rat	0.7–50 ng/mL	0.07 ng/mL	10 µL	EZRMGH-45K	EZRMGH-45BK
IL-6	Human	1.17–150 pg/mL	1.17 pg/mL	50 µL	EZIL6-98K	EZIL6-98K10PK
IL-8	Human	0.82–200 pg/mL	0.8 pg/mL	50 µL	EZHIL8-100K	EZHIL8-100K10PK
Insulin	Human	2–200 µU/mL	1.0 µU/mL	20 µL	EZHI-14K	EZHI-14BK
Insulin	Mouse, Rat	0.2–10 ng/mL	0.1 ng/mL	10 µL	EZRMI-13K	EZRMI-13BK
Leptin	Canine	0.78–50 ng/mL	0.21 ng/mL	20 µL	EZCL-31K	
Leptin	Mouse	0.2–30 ng/mL	0.05 ng/mL	10 µL	EZML-82K	EZML-82BK
Leptin	Rat	0.2–30 ng/mL	0.08 ng/mL	10 µL	EZRL-83K	EZRL-83BK
Leptin “Dual Range”	Human	0.5–100 ng/mL	0.2 ng/mL	25 µL	EZHL-80SK	EZHL-80BK
MCP-1	Human	7.18–1,000 pg/mL	7.18 pg/mL	10 µL (1:5 dilution)	EZMCP1-99KRM	EZMCP1-99K10PKRM
Procollagen Type IIA N-Propeptide (PIIANP)	Human	lot dependent	30.0 ng/mL	5 µL	EZPIIANP-53K	
Proinsulin (total)	Human	2–200 pM	0.5 pM	20 µL	EZHPI-15K	EZHPI-15BK
PYY (total)	Human	10–2,000 pg/mL	6.5 pg/mL	20 µL	EZHPPYT66K	
Resistin	Human	0.16–5 ng/mL	0.02 ng/mL	20 µL	EZHR-95K	EZHR-95BK
SAA-3	Mouse	0.078–5 µg/mL	0.078 µg/mL	10 µL	EZMSAA3-12K	
TNF-α	Human	1.65–400 pg/mL	1.65 pg/mL	50 µL	EZHTNFA-150K	EZHTNFA-150K10PK

\* Bulk packaging available on select kits — more environmentally friendly and saves space (10 kit equivalent)

•• Preferred assay for measuring GLP-1 (active)

Δ Chemiluminescent assay

# Millipore® Brand ELISAs & RIAs

Neuroscience ELISAs	Species	Standard Curve Range	Sensitivity	Sample Volume	Cat. No.
Amyloid beta 1-40	Human	16–500 pg/mL	4 pg/mL	50 µL	EZHS40
Amyloid beta 1-42	Human	16–500 pg/mL	5 pg/mL	50 µL	EZHS42
Amyloid beta, Set	Human	Contains 1 each of EZHS40 and EZHS42			EZHS-SET
Amyloid beta (Brain) 1-40	Human	16–500 pg/mL	4 pg/mL	50 µL	EZBRAIN40
Amyloid beta (Brain) 1-42	Human	16–500 pg/mL	5 pg/mL	50 µL	EZBRAIN42
Amyloid beta (Brain), Set	Human	Contains 1 each of EZBRAIN40 and EZBRAIN42			EZBRAIN-SET
BDNF (Brain-Derived Neurotrophic Factor)	Human, Rat	7.8–500 pg/mL	7.8 pg/mL	50 µL	CYT306
GFAP (Glial Fibrillary Acidic Protein)	Human, Mouse, Rat	1.5–100 ng/mL	1.5 ng/mL	100 µL	NS830
NPY (Neuropeptide Y)	Human	5–1,000 pg/mL	2 pg/mL	50 µL	EZHNPY-25K
NPY (Neuropeptide Y)	Mouse, Rat	0.01–2 ng/mL	0.004 ng/mL	20 µL	EZRMNPY-27K
PEDF (Pigment Epithelium-Derived Factor)	Human	0.9–62.5 ng/mL	0.9 ng/mL	50 µL	CYT420
Phosphorylated Neurofilament, (pNF-H) Sandwich	Multi-Species	0.0293–15 ng/mL	0.0585 ng/mL	1–10 µL	NS170
S100B	Human	2.7–2,000 pg/mL	1.3 pg/mL	50 µL	EZHS100B-33K
RIAs	Species	Standard Curve Range	Sensitivity	Sample Volume	Cat. No.
Adiponectin	Human	lot dependent	1 ng/mL	5 µL	HADP-61HK
C-Peptide	Canine	0.156–20 ng/mL	0.15 ng/mL	50 µL	CCP-24HK
C-Peptide	Human	0.1–5 ng/mL	0.1 ng/mL	50 µL	HCP-20K
Ghrelin (active)	Human	lot dependent	7.8 pg/mL	50 µL	GHRA-88HK
Ghrelin (total)	Human	lot dependent	93 pg/mL	50 µL	GHRT-89HK
GLP-1 (active)	Multi-Species	10–500 pM	3 pM	300 µL	GLP1A-35HK
GLP-1 (total)	Multi-Species	10–1,000 pM	3 pM	300 µL	GLP1T-36HK
Glucagon	Multi-Species	20–400 pg/mL	20 pg/mL	50 µL	GL-32K
Insulin	Porcine	2–200 µU/mL	2 µU/mL	50 µL	PI-12K
Insulin	Rat	0.1–10 ng/mL	0.1 ng/mL	50 µL	RI-13K
Insulin (sensitive)	Rat	0.02–1 ng/mL	0.02 ng/mL	50 µL	SRI-13K
Insulin Specific	Human	2–200 µU/mL	2 µU/mL	50 µL	HI-14K
Leptin	Human	0.5–100 ng/mL	0.5 ng/mL	50–100 µL	HL-81K
Leptin	Multi-Species	1–50 ng/mL	1 ng/mL	50 µL	XL-85K
Proinsulin	Human	2–100 pM	2 pM	100–200 µL	HPI-15K
PYY (3-36)	Human	lot dependent	20 pg/mL	<100 µL	PYY-67HK
PYY (total)	Human	lot dependent	10 pg/mL	<100 µL	PYYT-66HK

## Sigma-Aldrich® Brand ELISAs

We offer a portfolio of >1,300 ELISAs and EIAs, covering a diverse range of species, research areas, and sample types. Find your ELISA at [SigmaAldrich.com/elisa](https://SigmaAldrich.com/elisa)



# Make the Most of Your Immunoassays

## Ancillary Equipment to Optimize Your Assays

We offer washers and readers from Agilent (BioTek® instruments) to support all of our platforms.

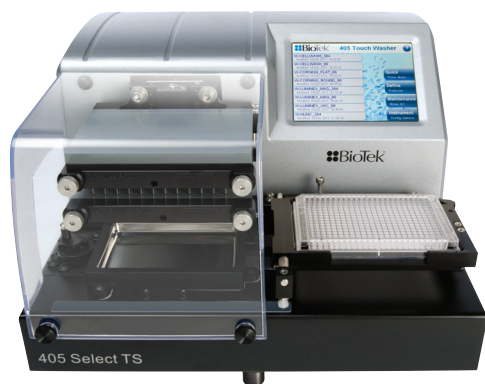
### BioTek® 405™ TSUVS Magnetic 96-Well Washer for SMC® Assays



This fully automated system is designed to quickly wash an entire plate through biomagnetic separation, washing, and vacuum filtration. The system comes specifically optimized for use with SMC® assays with the inclusion of a specially designed magnetic plate and customized pre-programmed plate washing protocols. The 405™ TSUVS model offers an easy-to-use and glove touchable screen.

Description	Cat. No.
BioTek® 405™ TSUVS Magnetic 96-Well Washer Complete with Touch Screen and Ultrasonic Cleaning for SMC® Assays	95-0004-05
SMC® Plate Washer Evaluation Kit	03-0165-00

### BioTek® Washing & Dispensing Solutions for MILLIPLEX® Assays



The MultiFlo™ FX dispenser allows users to dispense kit reagents, ensuring excellent assay reproducibility.

#### BioTek® washer advantages:

- Fast and hands-free full plate washing
- This washer includes an intuitive touch-screen user interface and the Ultrasonic Advantage™ cleaning program for easy washing of the toughest sample types

Description	Cat. No.
BioTek® 405™ TS Magnetic 96-Well Washer Complete with Touch Screen and Ultrasonic Cleaning	40-092AB

### Other Washers and ELISA Readers

Description	Cat. No.
BioTek® 50™ Magnetic 96-Well Strip Washer	40-301
BioTek® 800™ TS Absorbance Reader with Gen5™ Software	40-006
Handheld Magnetic Bead Washer Separator Block for 96-Well Flat Bottom or Conical Well Plates	40-285
BioTek® MultiFlo™ FX Multimode Dispenser	40-999

### Enhance Your Workflows

Explore BioTek® washers for our platforms at [SigmaAldrich.com/smc-washer](https://SigmaAldrich.com/smc-washer) and [SigmaAldrich.com/milliplex-washer](https://SigmaAldrich.com/milliplex-washer)

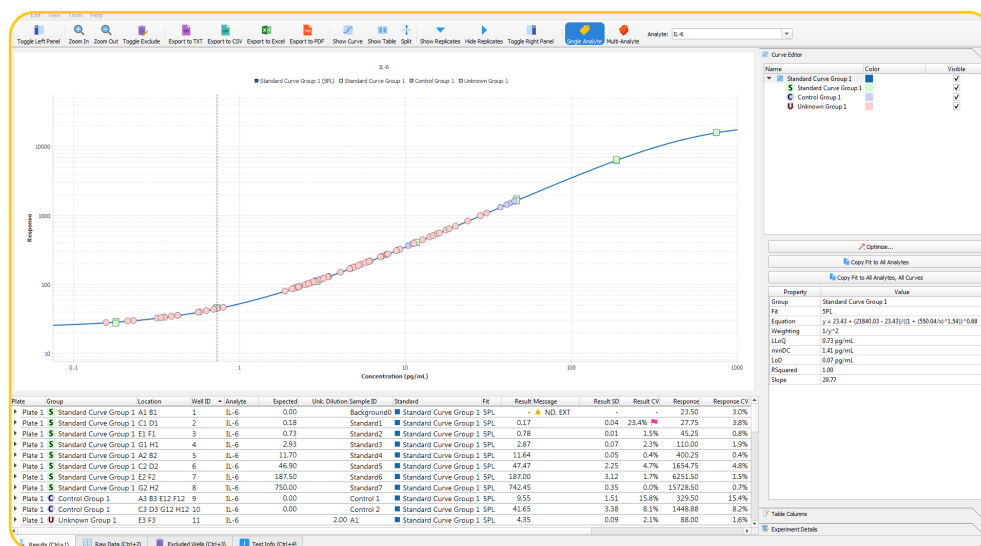
# Belysa® Immunoassay Curve Fitting Software

(Cat. No. 40-122)

Our newest proprietary software package for curve fitting, examination, and comparison of data acquired from a variety of immunoassay platforms. Belysa® software has been designed to provide an easy-to-use tool to optimize curve fit and confirm the integrity of data within a plate or across plates from multiple runs.

## Key Features and Benefits

- User-friendly interface
- Automatic and manual curve fitting (4pl, 5pl, linear, competitive, cubic spline)
- Curve comparison tools
- Rules-based data flagging
- Suitable for use with RUO Luminex® instruments, SMCxPRO® platform, and ELISA .csv acquisition files
- Windows 10 and macOS (beta) compatible



**Example 1.** Belysa® standard curve and data analysis: IL-6 MILLIPLEX® assay from a Luminex® xPONENT®.csv output file.

As shown in Example 1, a .csv output file is simply drag-and-dropped into the Belysa® browser for instant data review.

Once the user selects the curve fit model, either automatically by using the wizard, or manually, the data are displayed:

- Sample concentrations
- Recovery of standards
- Equation of line
- Limit of Detection (LOD)
- Lower Limit of Quantitation (LLOQ)
- Minimum Detectable Dose (MD)
- Data is exportable to: Excel, .csv, .txt, and .pdf



## Data Autoflagging

Message	Result SD	Result CV	Response	Response CV
▲ EXT, ND	-	-	15.75	2.2%
▲ BLOQ	0.03	3.6%	35.50	2.0%
▲ BLOQ	0.08	10.4%	32.75	5.4%
▲ BLOQ	0.13	16.4%	33.00	8.6%
▲ BLOQ	0.03	6.0%	27.50	2.6%
▲ BLOQ	0.03	3.8%	34.50	2.0%
▲ BLOQ	0.03	4.2%	32.50	2.2%
▲ BLOQ	0.03	3.4%	36.50	1.9%
▲ BLOQ	0.18	25.9%	30.75	12.6%
▲ BLOQ	0.00	0.0%	23.00	0.0%
▲ BLOQ	0.05	13.3%	23.75	4.5%
▲ BLOQ	0.06	27.1%	21.00	6.7%
▲ BLOQ	0.03	10.5%	22.50	3.1%
▲ BLOQ	0.10	10.7%	35.50	6.0%

As shown in Example 2, Belysa® software annotates data for hard rules such as below the limit of quantitation (BLOQ) using a yellow triangle. The user may define parameters such as acceptable %CV or bead counts which creates a pink flag next to the raw data that does not meet the user’s acceptance criteria. Then, a decision can be made to exclude points which will then be recorded if required for review.

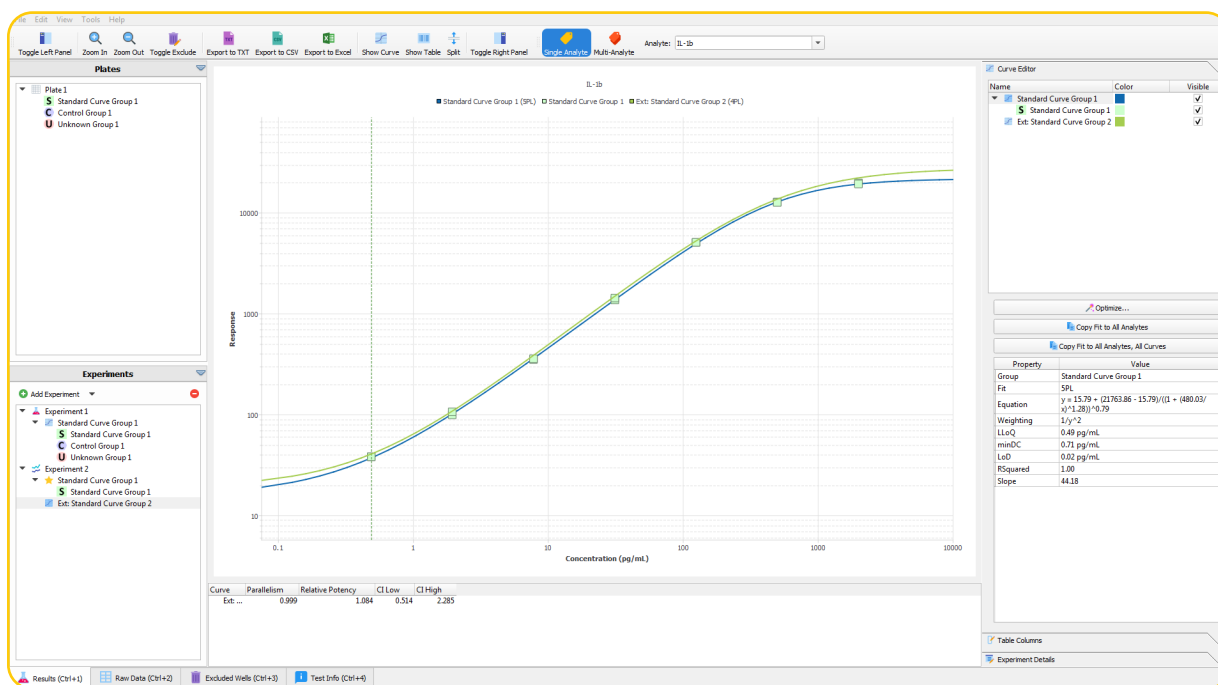
Example 2. Belysa® data annotation: below LLOQ (yellow triangle), %CV (pink flags).

## Belysa® Software Curve Comparison Tool

Comparing standard curves can provide crucial information on the reproducibility of an assay over multiple plates within specific runs or over the course of a longitudinal study. As shown in Example 3, Belysa® software provides a curve comparison tool for multiple curves imported from previously saved Belysa® output files. The first curve is used as a reference against which each subsequent curve is compared.

Comparison tests across multiple runs:

- Parallelism
- Relative potency of standards



Example 3. Comparison of two standard curves in Belysa® software from two lots of the same MILLIPLEX® assay run 1 year apart.

# CADI: Custom Assay Development & Innovation

Accelerate your research with custom SMC®, MILLIPLEX®, and ELISA assays designed for your specific biomarker needs.

We understand you don't always have the time, resources, or expertise to develop your own assay for your protein of interest. Rely on our vast development expertise and our ability to produce high-quality, reproducible immunoassays to help you accelerate your program from discovery research into clinical trials with a custom-designed solution.



**Get started today!**

View a complete listing of services at [SigmaAldrich.com/customassay](https://SigmaAldrich.com/customassay)



## Fit-For-Purpose Custom Assay Project Workflow

Develop a new SMC®, MILLIPLEX®, or ELISA assay which is fit for your purpose. We follow a milestone-based approach to generate an assay that quantifies your exact protein or proteins of interest. You will receive updates and data reviews during each milestone, offering you peace of mind that your project is on schedule and meeting specifications.



## Example Custom Assay Offerings

Cat. No.	Description	Description
SPRCUS1014	Custom Human 384-Well Circulating Cancer Biomarker Panel 3 8-Plex	H (S/P, Sup, Lys)
SPRCUS1016	Custom Human 384-Well Angiogenesis Panel 2 20-Plex	H (S/P, Sup, Lys)
SPRCUS1042	Custom Human 384-Well Immuno-Oncology Checkpoint Protein Panel 17-Plex	H (S/P, Sup)



# Custom MILLIPLEX® Analytes

Analyte	Species (Sample Types)
α-1 Antichymotrypsin	H (S/P)
α-2 Antiplasmin	H (S/P)
AGP (α 1-Acid Glycoprotein)	H (U)
Angiopoetin-1	H (S/P, T)
Anti-Cardiolipin antibody IgA	H (S/P)
Anti-EBV VCA IgG	H (S/P)
Anti-Phosphatidylserine IgG, IgM	H (S/P)
Antithrombin iii	H (S/P, Sup, Lys)
Apolipoprotein A-IV	H (S/P)
Arginase 1	M (S/P)
AXL (s)	M, R (S/P)
BAD (Ser112)	H, M (Lys)**
BCMA (B-cell Maturation Antigen)	H (S/P)
BMP-9	M, R (S/P)
BRD4	H, M, R (Lys)
Caspase 3 (Active)	H, M (Lys)**
CBP	H, M, R (Lys)
CD13 Aminopeptidase N	H (S/P)
CD163 (s)	H (S/P)
Ceruloplasmin	H (U)
Cleaved PARP (total)	H (Lys)**
CSTB (Cystatin B)	H (S/P)
Elafin	H (S/P)
Extracellular Matrix Protein (ECM1)	H (S/P, Sup, Lys)
FGF-23	M (S/P, Sup)
Fibronectin	H (S/P)
G3BP (Galectin 3 Binding Protein)	H (U)
Gas-6	H, M, R (S/P)
Granzyme A	M (S/P)
Gremlin	M, R (S/P)
GRP78	H (S/P)
HGFR/cMET	M, R (S/P)
I-FABP	H (S/P)
IGF-1	M, R (S/P)
IL-18	M, R (S/P)
IL-33R/ST2 (Suppressor of Tumorigenicity 2)	H (S/P)

Analyte	Species (Sample Types)
Insulin	F (S/P)
Involucrin	H (S/P)
IRS1 (Ser133)	H, M, R (S/P)
IRS1 (total)	H, M, R (S/P)
Keratin-1,10	H (S/P)
Keratin-6	H (S/P)
LPGDS (Lipocalin like prostaglandin D synthase)	H (U)
Lysozyme C	H (S/P)
MIP-1γ	M, R (S/P)
MR-proADM	H (S/P)
Osteoprotegrin (OPG)	M (S/P, Sup)
p300	H, M, R (Lys)
p38/SAPK2A/B (Thr180/Tyr182)	H, M, R (Lys)**
p38/SAPK2A/B (total)	H, M, R (Lys)**
Periostin	M, R (S/P)
PODXL	M, R (S/P)
Prealbumin (Transthyretin)	H (S/P)
Procalcitonin	H, M, R (S/P)
Prostaglandin D Synthase (lipocalin-type)	H (S/P, CSF, Sup)
Sclerostin (SOST)	M (S/P, Sup)
Semaphorin 3A	H (Sup)
STAT1 (total)	H, M (Lys)**
Tenascin C	M, R (S/P)
Testosterone	Mul (S/P, Sup)
Thyroxine Binding Globulin	H (S/P)
TRAIL	M, R (S/P)
Transferrin	H (U)
Vasopressin	M, R (P)
VE Cadherin/Cadherin 5	H (S/P)
Vitamin D Binding Protein	H (S/P, Sup, Lys)
Vitronectin	M, R (S/P)
Wnt-3a	H (S/P, Sup, Lys)
Zinc-α-2 Glycoprotein	H (S/P)

## Species Key

<b>H</b>	Human
<b>M</b>	Mouse
<b>R</b>	Rat
<b>F</b>	Feline
<b>Mul</b>	Multi-Species

## Sample Type Key

<b>CSF</b>	Cerebral Spinal Fluid
<b>Lys</b>	Cell/Tissue Lysates
<b>S/P</b>	Serum/Plasma
<b>Sup</b>	Cell/Tissue Culture Supernatants
<b>T</b>	Tears
<b>U</b>	Urine

## Notations

<b>s</b>	Soluble analyte
<b>**</b>	No standard/QC; levels reported as MFIs (Median Fluorescence Intensities)

CUSTOM

CUSTOM ASSAY DEVELOPMENT & INNOVATION (CAD1)

FOR RESEARCH USE ONLY. NOT FOR USE IN DIAGNOSTIC PROCEDURES.

# Beyond the Assay Development Workflow

In addition to our assay development services, we can support your other custom assay needs.

## Our additional capabilities include:

### Switching Formats

- MILLIPLEX® Assays: 96-well to 384-well
- SMC® Assays: bead-based to plate-based
- Converting MILLIPLEX® assays to SMC® assay platform

### Sample Testing

- Prototype sample testing
- Proprietary kit sample testing (SMC® assays only)
- SMC® immunoassay kit testing (SMC® assays only)

### Biotherapeutic Assay Development

- Pharmacokinetics
- Pharmacodynamics
- Immunogenicity

### SMCxPlore™ Proof of Concept Sample Testing:

Use our SMCxPlore™ proof of concept sample testing service to “explore” SMC® technology with your analyte of interest or critical samples. Test up to 30 of your critical samples using one of our highly verified SMC® immunoassays.

### Questions About CADI?

Explore our FAQs at [SigmaAldrich.com/cadi-faqs](https://SigmaAldrich.com/cadi-faqs)



# BEYOND BIOMARKERS

Keep your focus on the next stage

## Rigorous Assay Development

### Specificity

- Antibody specificity is tested to ensure negligible cross-reactivity in the tested sample types
- Assay specificity is ensured by confirming consistent performance in singleplex and multiplex formats

### Method Comparisons

- We test our kits against in-house kits and kits from other vendors when available, ensuring the highest performing kits

### Selectivity

- Assay buffers and bead diluents are optimized to enhance antibody binding to only those analytes of interest in samples

### Detection and Sensitivity

- The assay range and minimum detectible concentrations (minDCs or LLOQ) for each analyte is published in our protocols, and is based on actual samples

### Performance in a Sample Matrix

- Assays are verified for the sample type noted in the protocol; for serum/plasma sample kits, we provide an optimized serum matrix to mimic the environment of the sample, normalizing assay performance

## Reproducible Results You Can Trust

### Stability

- All kits are rigorously tested for shipping stability to determine impact on each analyte
- Sample stability is examined at a range of temperatures, and by freeze/thaw

### Precision and Accuracy

- Precision of control standards are typically within 15% CV for intra-assay and 20% CV for inter-assay
- Spike recovery in sample is performed for each analyte at three concentrations; accuracy is normally within  $\pm 30\%$

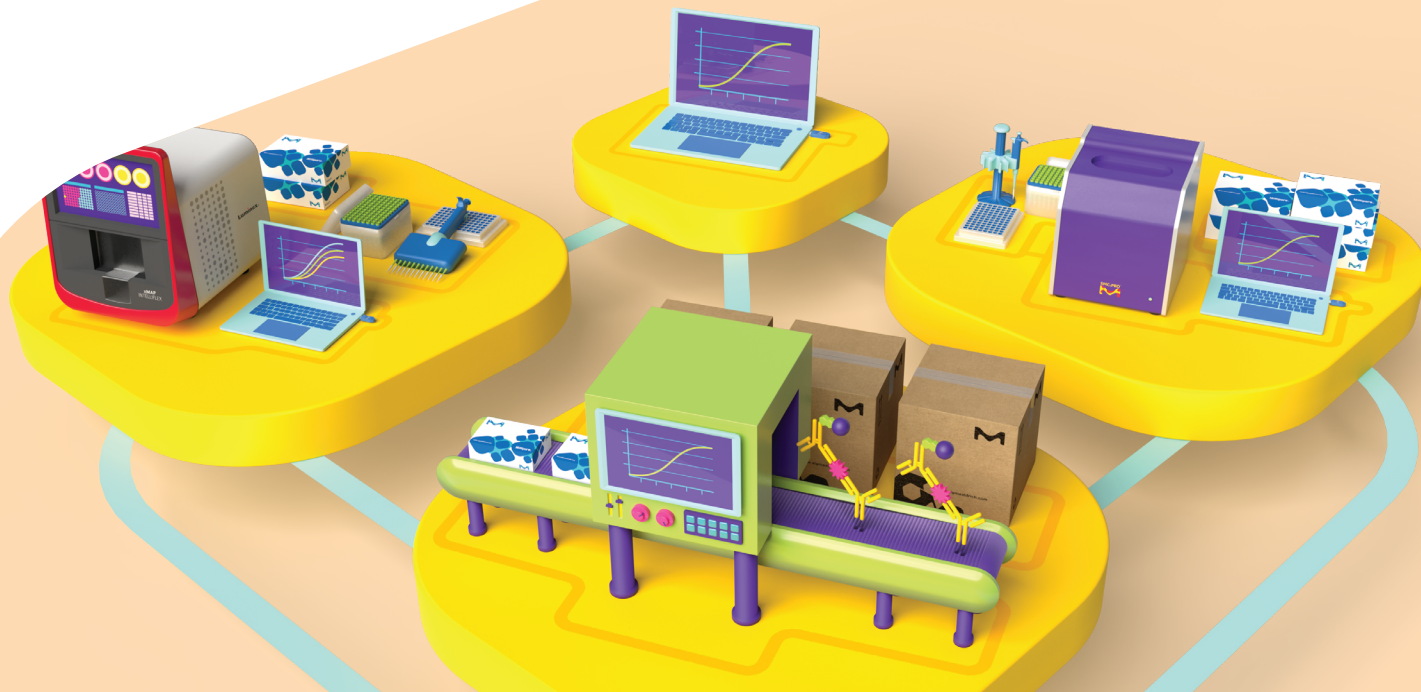
### Linearity of Dilution

- Diluted sample results must be directly proportional to the concentration of analyte in the sample, typically within  $\pm 30\%$

### Lot-to-Lot Consistency

- A “gold standard” calibrator is defined during assay development and used as a reference for all future production lots

We'll help you choose the right platform and assays to meet your needs today, and we'll partner with you to meet those needs in the future — without compromising quality.



# Millipore®

Preparation, Separation,  
Filtration & Monitoring Products

MilliporeSigma  
400 Summit Drive  
Burlington, MA 01803

**SigmaAldrich.com**



Scan to download  
a digital copy.



**Keep up to date!**

Don't miss out on updates by  
signing up for our newsletter:  
[SigmaAldrich.com/analyteupdate](https://SigmaAldrich.com/analyteupdate)

## To place an order or receive technical assistance

Order/Customer Service: [SigmaAldrich.com/order](https://SigmaAldrich.com/order)

Technical Service: [SigmaAldrich.com/techservice](https://SigmaAldrich.com/techservice)

Safety-related Information: [SigmaAldrich.com/safetycenter](https://SigmaAldrich.com/safetycenter)

We have built a unique collection of life science brands with  
unrivalled experience in supporting your scientific advancements.

**Millipore® Sigma-Aldrich® Supelco® Milli-Q® SAFC® BioReliance®**

© 2023 Merck KGaA, Darmstadt, Germany and/or its affiliates. All Rights Reserved. MilliporeSigma, the vibrant M, Millipore, Sigma-Aldrich, Supelco, Milli-Q, SAFC, BioReliance, MILLIPLEX, MAPmate, SMCxPRO, Belysa, and Conferma are trademarks of Merck KGaA, Darmstadt, Germany or its affiliates. All other trademarks are the property of their respective owners. Detailed information on trademarks is available via publicly accessible resources.

MS\_PG7752EN Ver. 5.0  
49304  
08/2023